

\$4,903,850 - Hwy 16 A Glory Hills Road, Stony Plain

MLS® #E4388479

\$4,903,850

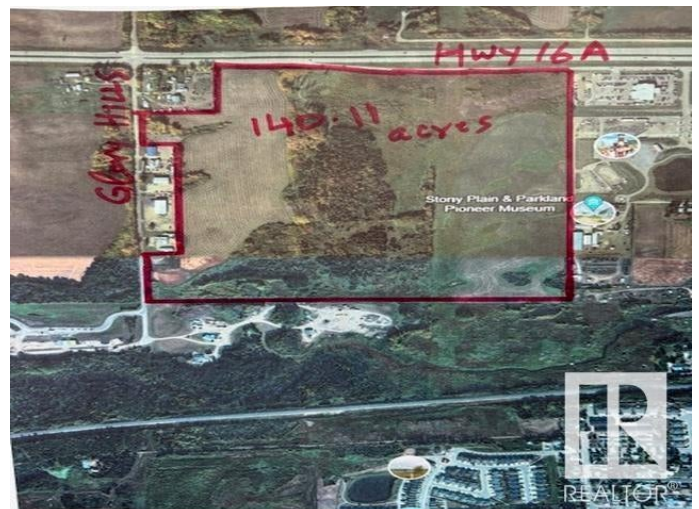
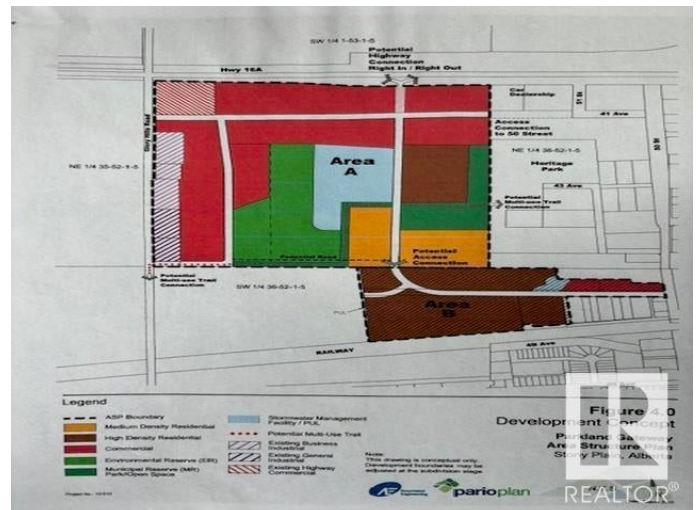
0 Bedroom, 0.00 Bathroom,
Land Commercial on 0.00 Acres

None, Stony Plain, AB

Excellent piece of land 140.11 acres, located on the Hwy 16A & Glory Hills Road in the Stony Plain. These lands are ready for immediate development. The Structure pan of this property has already been approved, called PARKLAND GATEWAY AREA STRUCTURE PLAN and the zonings proposed in ASP are commercial, business, and residential (single family, multifamily) Town of Stony Plain sewer line runs through these lands and water line is in close proximity to the east boundary line of the property. This developable property is situated within Town of Stony Plain and has optimum Highway exposure with close to 12,000 vehicles/day west of hwy 779(in stony plain) while east of hwy 779 on Hwy 16A is about 23,400+- vehicles/day. Stony Plain has favorable tax rates and is a growing community with a trading area of about 130,000 people. Property has a direct access to Downtown Stony Plain via 50 street. Nearby amenities include Stony Plain Chrysler, Stony Plain HERITAGE PARK and Pavilion, Stony Plain & Parkland Museum.

Essential Information

MLS® #	E4388479
Price	\$4,903,850
Bathrooms	0.00



Acres	0.00
Type	Land Commercial
Status	Active

Community Information

Address	Hwy 16 A Glory Hills Road
Area	Stony Plain
Subdivision	None
City	Stony Plain
County	ALBERTA
Province	AB
Postal Code	T7Z 0A2

Additional Information

Date Listed	May 21st, 2024
Days on Market	345
Zoning	Zone 91

DATA IS DEEMED RELIABLE BUT IS NOT GUARANTEED ACCURATE BY THE REALTORS® ASSOCIATION OF EDMONTON. COPYRIGHT 2025 BY THE REALTORS® ASSOCIATION OF EDMONTON. ALL RIGHTS RESERVED. Trademarks are owned or controlled by the Canadian Real Estate Association (CREA) and identify real estate professionals who are members of CREA (REALTOR®, REALTORS®) and/or the quality of services they provide (MLS®, Multiple Listing Service®)

Listing information last updated on May 1st, 2025 at 4:02am MDT