

# **\$1,190,000 - 51004 Rge Road 263, Rural Parkland County**

MLS® #E4422394

**\$1,190,000**

6 Bedroom, 3.50 Bathroom, 3,063 sqft

Rural on 5.82 Acres

None, Rural Parkland County, AB

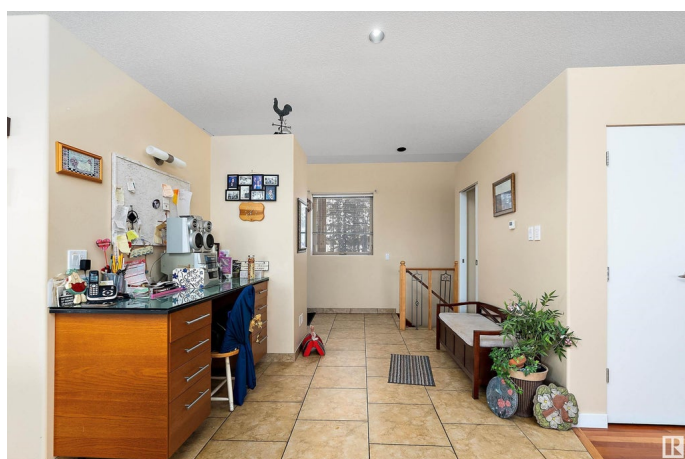
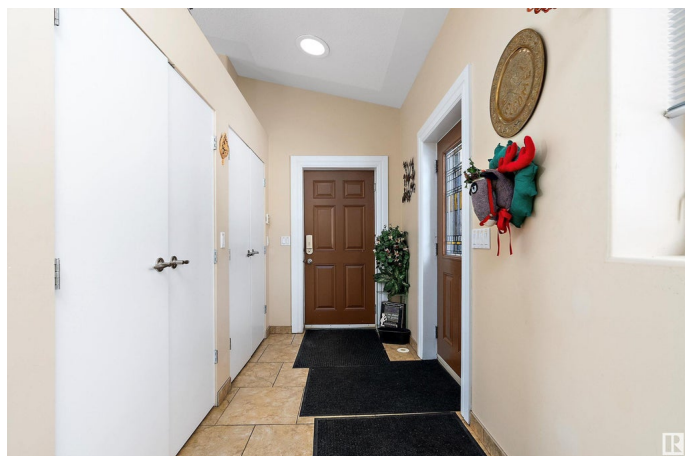
Discover this beautiful custom ICF bungalow, offering 3,062 sq ft of living space on 5.82 acres, just outside Devon with views of the North Saskatchewan River. Featuring 6 bedrooms, 3.1 bathrooms, and a large open basement with heated floors, this home is designed for comfort and style. The main floor boasts 14' ceilings, a chef's kitchen with island, eating bar, gas countertop stove, double ovens, and walk-in pantry, 3 large sized of bedroom and an office. The master suite includes a 5-piece ensuite and walk-in closet. Additional features include a formal dining area, living room, and sitting room, all with gas fireplaces. Gleaming 1" American Cherry hardwood floors complete the space. The Basement offers a large family room, 3 bedrooms, a 5-piece bath, and heated floors. Outside, enjoy a 25' x 25' covered deck, 2 storage buildings, and mature trees. Located minutes from Devon, the International Airport, and West Edmonton, this property offers privacy with easy access to amenities.

Built in 2007

## **Essential Information**

MLS® # E4422394

Price \$1,190,000



Bedrooms	6
Bathrooms	3.50
Full Baths	3
Half Baths	1
Square Footage	3,063
Acres	5.82
Year Built	2007
Type	Rural
Sub-Type	Detached Single Family
Style	Bungalow
Status	Active

### Community Information

Address	51004 Rge Road 263
Area	Rural Parkland County
Subdivision	None
City	Rural Parkland County
County	ALBERTA
Province	AB
Postal Code	T7Y 1E2

### Amenities

Features	Air Conditioner, Carbon Monoxide Detectors, Ceiling 10 ft., Deck, Detectors Smoke, Fire Pit, Hot Water Instant, Insulation-Upgraded, Parking-Extra, R.V. Storage, Exterior Walls 2"x12", 9 ft. Basement Ceiling
----------	---

### Interior

Interior Features	ensuite bathroom
Heating	See Remarks, Natural Gas
Fireplace	Yes
Stories	1
Has Basement	Yes
Basement	Full, See Remarks

### Exterior

Exterior	Wood
Exterior Features	No Through Road, Treed Lot, See Remarks
Construction	Wood

Foundation                      Concrete Perimeter

**Additional Information**

Date Listed                      February 21st, 2025

Days on Market                70

Zoning                            Zone 90

DATA IS DEEMED RELIABLE BUT IS NOT GUARANTEED ACCURATE BY THE REALTORS® ASSOCIATION OF EDMONTON. COPYRIGHT 2025 BY THE REALTORS® ASSOCIATION OF EDMONTON. ALL RIGHTS RESERVED.Trademarks are owned or controlled by the Canadian Real Estate Association (CREA) and identify real estate professionals who are members of CREA (REALTOR®, REALTORS®) and/or the quality of services they provide (MLS®, Multiple Listing Service®)

Listing information last updated on May 2nd, 2025 at 3:33pm MDT