

Courtesy Of Brice J Laidler Of Black Sheep Realty

# **\$369,000 - 108 9503 101 Avenue, Edmonton**

MLS® #E4423381

**\$369,000**

2 Bedroom, 2.00 Bathroom, 1,227 sqft  
Condo / Townhouse on 0.00 Acres

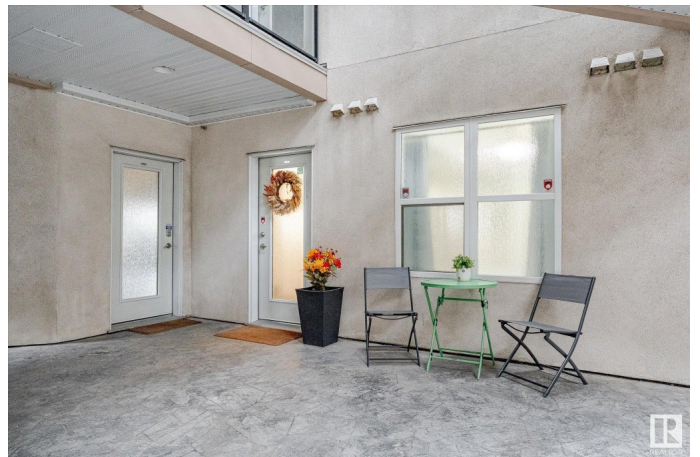
Riverdale, Edmonton, AB

Looking for a beautifully renovated downtown condo with river valley views and unbeatable access to Edmonton's best walking trails? Welcome to The View in Riverdale! This stunning main-floor unit is one of the largest in the building, offering over 1,200 sq. ft. of thoughtfully designed living space. The fully remodeled kitchen features an oversized island with waterfall granite countertops, breakfast seating, bright white cabinetry, new stainless steel appliances, new lighting throughout and undermount lighting, and stylish fixtures. Both bathrooms have been refreshed with new vanities, toilets, and modern tile flooring. Wake up in your primary suite to gorgeous river valley views, and enjoy the same scenery from your open-concept living and dining area—perfect for hosting. Step onto your private patio and soak in the peaceful surroundings. Plus, you're just a short walk to Lower Riverdale's cafés, restaurants, and breweries. Comes with a tandem parking stall and storage!

Built in 2002

## **Essential Information**

|          |           |
|----------|-----------|
| MLS® #   | E4423381  |
| Price    | \$369,000 |
| Bedrooms | 2         |



|                |                        |
|----------------|------------------------|
| Bathrooms      | 2.00                   |
| Full Baths     | 2                      |
| Square Footage | 1,227                  |
| Acres          | 0.00                   |
| Year Built     | 2002                   |
| Type           | Condo / Townhouse      |
| Sub-Type       | Lowrise Apartment      |
| Style          | Single Level Apartment |
| Status         | Active                 |

### Community Information

|             |                     |
|-------------|---------------------|
| Address     | 108 9503 101 Avenue |
| Area        | Edmonton            |
| Subdivision | Riverdale           |
| City        | Edmonton            |
| County      | ALBERTA             |
| Province    | AB                  |
| Postal Code | T5H 4R1             |

### Amenities

|           |                                                                                                                     |
|-----------|---------------------------------------------------------------------------------------------------------------------|
| Amenities | Air Conditioner, Ceiling 9 ft., Parking-Visitor, Patio, Secured Parking, Security Door, Vinyl Windows, Storage Cage |
| Parking   | Double Indoor, Heated, Tandem, Underground                                                                          |

### Interior

|                   |                                                                                                               |
|-------------------|---------------------------------------------------------------------------------------------------------------|
| Interior Features | ensuite bathroom                                                                                              |
| Appliances        | Dishwasher-Built-In, Microwave Hood Fan, Refrigerator, Stacked Washer/Dryer, Stove-Electric, Window Coverings |
| Heating           | Forced Air-1, Natural Gas                                                                                     |
| # of Stories      | 5                                                                                                             |
| Stories           | 1                                                                                                             |
| Has Basement      | Yes                                                                                                           |
| Basement          | None, No Basement                                                                                             |

### Exterior

|                   |                                                                                                                                                                                                                  |
|-------------------|------------------------------------------------------------------------------------------------------------------------------------------------------------------------------------------------------------------|
| Exterior          | Wood, Stone, Stucco                                                                                                                                                                                              |
| Exterior Features | Backs Onto Park/Trees, Fenced, Golf Nearby, Hillside, Landscaped, Picnic Area, Playground Nearby, Private Setting, Public Transportation, River Valley View, River View, Schools, Shopping Nearby, View Downtown |

|              |                     |
|--------------|---------------------|
| Roof         | Flat                |
| Construction | Wood, Stone, Stucco |
| Foundation   | Concrete Perimeter  |

### **Additional Information**

|                |                     |
|----------------|---------------------|
| Date Listed    | February 28th, 2025 |
| Days on Market | 62                  |
| Zoning         | Zone 13             |
| Condo Fee      | \$641               |

DATA IS DEEMED RELIABLE BUT IS NOT GUARANTEED ACCURATE BY THE REALTORS® ASSOCIATION OF EDMONTON. COPYRIGHT 2025 BY THE REALTORS® ASSOCIATION OF EDMONTON. ALL RIGHTS RESERVED. Trademarks are owned or controlled by the Canadian Real Estate Association (CREA) and identify real estate professionals who are members of CREA (REALTOR®, REALTORS®) and/or the quality of services they provide (MLS®, Multiple Listing Service®)

Listing information last updated on May 1st, 2025 at 5:47am MDT