

\$450,000 - 9106 153 Street, Edmonton

MLS® #E4426764

\$450,000

5 Bedroom, 2.00 Bathroom, 971 sqft
Single Family on 0.00 Acres

Jasper Park, Edmonton, AB

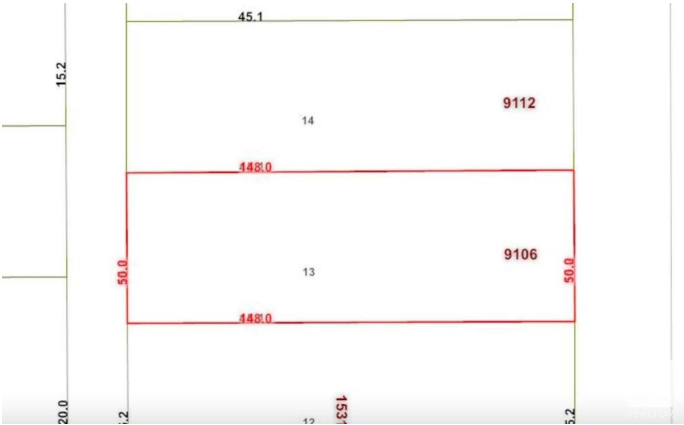
Attention Families, Developers and Investors!
This well-maintained home on a 50' x 148' lot in Jasper Park offers 687 sq/m of prime redevelopment potential. Featuring a double detached garage, west-facing backyard, front driveway, and rear alley access, it's ideal for families, tenants, or developers seeking their next multi-unit project. Conveniently located near West Edmonton Mall, Whitemud Drive, Downtown, and the upcoming West Valley LRT line. Donâ€™t miss this excellent opportunity!

Built in 1959

Essential Information

| | |
|----------------|------------------------|
| MLS® # | E4426764 |
| Price | \$450,000 |
| Bedrooms | 5 |
| Bathrooms | 2.00 |
| Full Baths | 2 |
| Square Footage | 971 |
| Acres | 0.00 |
| Year Built | 1959 |
| Type | Single Family |
| Sub-Type | Detached Single Family |
| Style | Bungalow |
| Status | Active |

Community Information



| | |
|-------------|-----------------|
| Address | 9106 153 Street |
| Area | Edmonton |
| Subdivision | Jasper Park |
| City | Edmonton |
| County | ALBERTA |
| Province | AB |
| Postal Code | T5R 1P6 |

Amenities

| | |
|----------------|--|
| Amenities | Deck, No Animal Home, No Smoking Home, Sauna; Swirlpool; Steam, Vinyl Windows, See Remarks |
| Parking Spaces | 6 |
| Parking | Double Garage Detached, Front Drive Access, Parking Pad Cement/Paved |

Interior

| | |
|-------------------|--|
| Interior Features | ensuite bathroom |
| Appliances | Dishwasher-Built-In, Dryer, Hood Fan, Refrigerator, Storage Shed, Stove-Electric, Washer, Window Coverings |
| Heating | Forced Air-1, Natural Gas |
| Stories | 2 |
| Has Basement | Yes |
| Basement | Full, Finished |

Exterior

| | |
|-------------------|---|
| Exterior | Wood, Metal |
| Exterior Features | Back Lane, Fenced, Flat Site, Fruit Trees/Shrubs, Playground Nearby, Public Transportation, Schools, Shopping Nearby, See Remarks |
| Roof | Asphalt Shingles |
| Construction | Wood, Metal |
| Foundation | Concrete Perimeter |

Additional Information

| | |
|----------------|------------------|
| Date Listed | March 21st, 2025 |
| Days on Market | 41 |
| Zoning | Zone 22 |

DATA IS DEEMED RELIABLE BUT IS NOT GUARANTEED ACCURATE BY THE REALTORS® ASSOCIATION OF EDMONTON. COPYRIGHT 2025 BY THE REALTORS® ASSOCIATION OF EDMONTON. ALL RIGHTS RESERVED. Trademarks are owned or controlled by the Canadian Real Estate Association (CREA) and identify real estate professionals who are members of CREA (REALTOR®, REALTORS®) and/or the quality of services they

provide (MLS® , Multiple Listing Service®)
Listing information last updated on May 1st, 2025 at 12:17am MDT