

\$197,250 - 104 1510 Watt Drive, Edmonton

MLS® #E4427626

\$197,250

1 Bedroom, 1.00 Bathroom, 671 sqft

Condo / Townhouse on 0.00 Acres

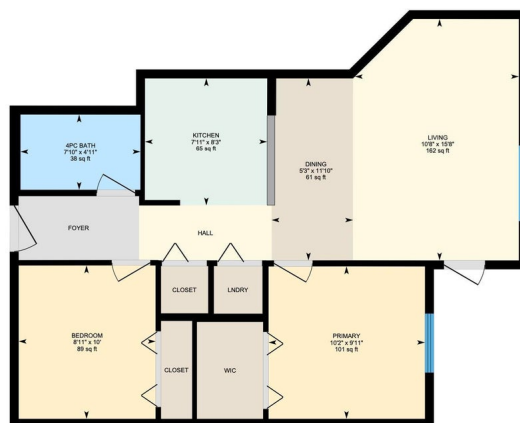
Walker, Edmonton, AB

Welcome to this beautiful ground-floor condo that perfectly combines modern style and comfort. Featuring 1 bedroom, 1 bathroom, and an additional room with a closet, this property offers a smooth open-concept design, making it a great choice for both homeowners and investors. The sleek kitchen includes granite countertops, upgraded cabinets, stainless steel appliances, and a pantry to meet your daily needs. Enjoy the spacious private concrete patio, perfect for relaxing or entertaining guests. This condo also comes with the convenience of in-suite laundry and two parking spots (one above ground and one heated underground). It's everything you need and more, with easy access to amenities, Anthony Henday, and walking trails.

Built in 2016

Essential Information

| | |
|----------------|-----------|
| MLS® # | E4427626 |
| Price | \$197,250 |
| Bedrooms | 1 |
| Bathrooms | 1.00 |
| Full Baths | 1 |
| Square Footage | 671 |
| Acres | 0.00 |
| Year Built | 2016 |



| | |
|----------|------------------------|
| Type | Condo / Townhouse |
| Sub-Type | Lowrise Apartment |
| Style | Single Level Apartment |
| Status | Active |

Community Information

| | |
|-------------|---------------------|
| Address | 104 1510 Watt Drive |
| Area | Edmonton |
| Subdivision | Walker |
| City | Edmonton |
| County | ALBERTA |
| Province | AB |
| Postal Code | T6X 2E6 |

Amenities

| | |
|-----------|---|
| Amenities | Intercom, No Smoking Home, Parking-Extra, See Remarks |
| Parking | Stall, Underground |

Interior

| | |
|--------------|--|
| Appliances | Dishwasher-Built-In, Dryer, Refrigerator, Stove-Electric, Washer |
| Heating | Baseboard, Water |
| # of Stories | 4 |
| Stories | 4 |
| Has Basement | Yes |
| Basement | None, No Basement |

Exterior

| | |
|-------------------|--|
| Exterior | Wood, Stone, Vinyl |
| Exterior Features | Airport Nearby, Golf Nearby, No Back Lane, No Through Road, Picnic Area, Playground Nearby, Public Transportation, Shopping Nearby |
| Roof | Asphalt Shingles |
| Construction | Wood, Stone, Vinyl |
| Foundation | Concrete Perimeter |

Additional Information

| | |
|----------------|------------------|
| Date Listed | March 26th, 2025 |
| Days on Market | 83 |
| Zoning | Zone 53 |
| Condo Fee | \$383 |

DATA IS DEEMED RELIABLE BUT IS NOT GUARANTEED ACCURATE BY THE REALTORS® ASSOCIATION OF EDMONTON. COPYRIGHT 2025 BY THE REALTORS® ASSOCIATION OF EDMONTON. ALL RIGHTS RESERVED.Trademarks are owned or controlled by the Canadian Real Estate Association (CREA) and identify real estate professionals who are members of CREA (REALTOR®, REALTORS®) and/or the quality of services they provide (MLS®, Multiple Listing Service®)

Listing information last updated on June 17th, 2025 at 7:17am MDT