

\$1,555,200 - 11611 107, Edmonton

MLS® #E4429932

\$1,555,200

0 Bedroom, 0.00 Bathroom,
Retail on 0.00 Acres

Queen Mary Park, Edmonton, AB

Positioned near Unity Square and the Brewery District, Vibe Professional Centre combines striking modern design with functional flexibility. With abundant natural light, great signage potential, and free parking, this location supports a wide range of business uses. Now available for lease or for purchase, this property presents an excellent owner-user opportunity. Secure your own space while benefiting from rental income generated by existing tenancies â€” a smart way to offset your mortgage and build equity over time. Own and operate in one of Edmontonâ€™s most vibrant and growing areas.

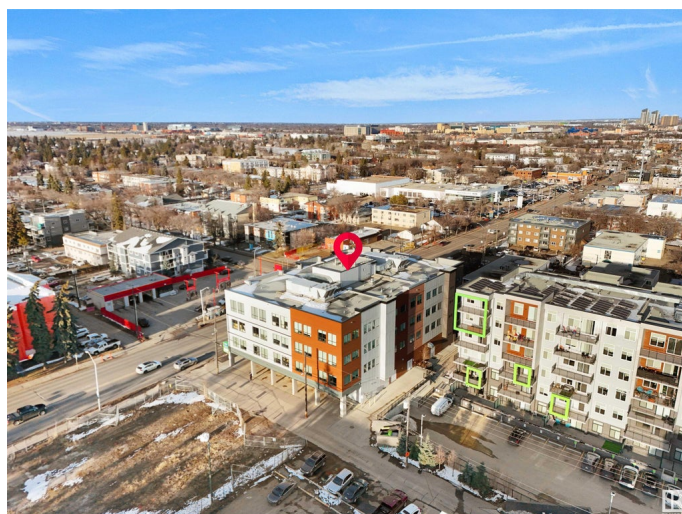
Built in 2015

Essential Information

MLS® #	E4429932
Price	\$1,555,200
Bathrooms	0.00
Acres	0.00
Year Built	2015
Type	Retail
Status	Active

Community Information

Address	11611 107
Area	Edmonton



Subdivision	Queen Mary Park
City	Edmonton
County	ALBERTA
Province	AB
Postal Code	T5H 0P9

Exterior

Exterior	Block
Construction	Block

Additional Information

Date Listed	April 9th, 2025
Days on Market	116
Zoning	Zone 08

DATA IS DEEMED RELIABLE BUT IS NOT GUARANTEED ACCURATE BY THE REALTORS® ASSOCIATION OF EDMONTON. COPYRIGHT 2025 BY THE REALTORS® ASSOCIATION OF EDMONTON. ALL RIGHTS RESERVED. Trademarks are owned or controlled by the Canadian Real Estate Association (CREA) and identify real estate professionals who are members of CREA (REALTOR®, REALTORS®) and/or the quality of services they provide (MLS®, Multiple Listing Service®)

Listing information last updated on August 3rd, 2025 at 9:47am MDT