

## \$0 - 2003 Tudor Glen Place, St. Albert

MLS® #E4431112

**\$0**

0 Bedroom, 0.00 Bathroom,  
Retail on 0.00 Acres

Grandin, St. Albert, AB

Main floor retail space of 1,455 sq. ft. New ceiling, lights & flooring. Shopping plaza on Gervais Road between Highway 2 N and 170 Street into Edmonton - Easy access. Ready for occupancy!

Built in 1981

### Essential Information

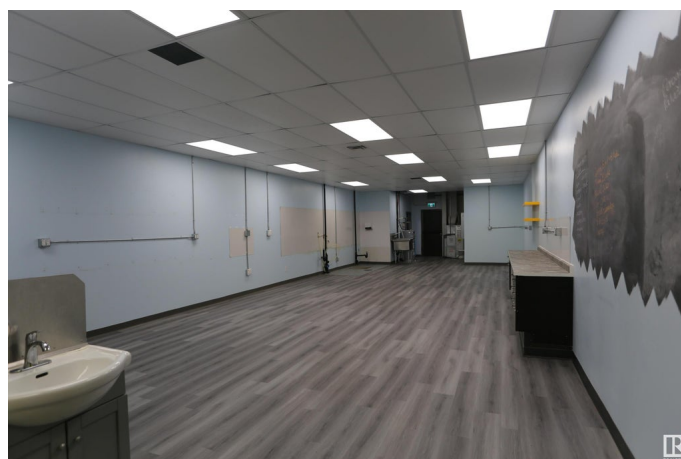
MLS® #	E4431112
Bathrooms	0.00
Acres	0.00
Year Built	1981
Type	Retail
Status	Active

### Community Information

Address	2003 Tudor Glen Place
Area	St. Albert
Subdivision	Grandin
City	St. Albert
County	ALBERTA
Province	AB
Postal Code	T8N 3V4

### Exterior

Exterior	Block
Construction	Block



**Additional Information**

Date Listed            April 16th, 2025  
Days on Market      112  
Zoning                Zone 24

DATA IS DEEMED RELIABLE BUT IS NOT GUARANTEED ACCURATE BY THE REALTORS® ASSOCIATION OF EDMONTON. COPYRIGHT 2025 BY THE REALTORS® ASSOCIATION OF EDMONTON. ALL RIGHTS RESERVED.Trademarks are owned or controlled by the Canadian Real Estate Association (CREA) and identify real estate professionals who are members of CREA (REALTOR®, REALTORS®) and/or the quality of services they provide (MLS®, Multiple Listing Service®)  
Listing information last updated on August 6th, 2025 at 3:17am MDT