

\$109,000 - 203 9028 Jasper Avenue, Edmonton

MLS® #E4431189

\$109,000

2 Bedroom, 1.00 Bathroom, 903 sqft

Condo / Townhouse on 0.00 Acres

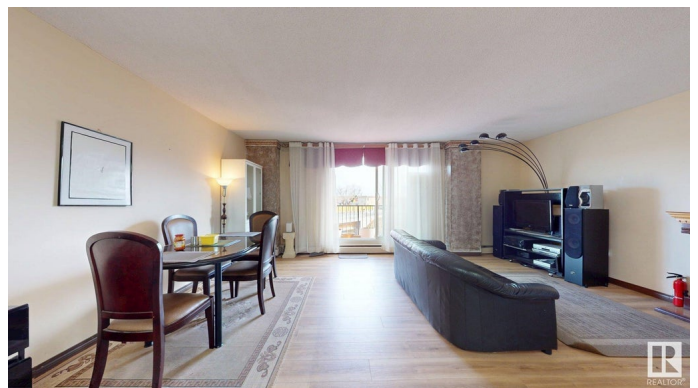
Boyle Street, Edmonton, AB

Prime Downtown Location! This bright and spacious 2-bedroom, 1-bath condo offers unbeatable value with stunning panoramic views of the River Valley â€” perfect for first-time buyers, students, young professionals, or those looking to expand their rental portfolio. Enjoy the convenience of having all utilities included â€” heat, water, and electricity â€” making it a budget-friendly and hassle-free choice. This unit also comes with one assigned underground parking stall and a secure storage space, adding even more value and practicality. Located just minutes from the Ice District, Commonwealth Recreation Centre, LRT, shopping, restaurants, cafÃ©s, nightlife, and the scenic River Valley walking/biking trails, this condo puts the best of Edmonton at your fingertips. Whether you're looking to live, rent, or invest, this is a smart move in one of Edmontonâ€™s most desirable central communities. Act fast â€” opportunities like this donâ€™t last long at this price!

Built in 1971

Essential Information

MLS® #	E4431189
Price	\$109,000
Bedrooms	2



Bathrooms	1.00
Full Baths	1
Square Footage	903
Acres	0.00
Year Built	1971
Type	Condo / Townhouse
Sub-Type	Apartment High Rise
Style	Single Level Apartment
Status	Active

Community Information

Address	203 9028 Jasper Avenue
Area	Edmonton
Subdivision	Boyle Street
City	Edmonton
County	ALBERTA
Province	AB
Postal Code	T5H 3Y6

Amenities

Amenities	Security Door, Storage-Locker Room, Storage Cage
Parking	Stall, Underground

Interior

Appliances	Dishwasher-Built-In, Hood Fan, Refrigerator, Stove-Electric
Heating	Hot Water, Natural Gas
# of Stories	11
Stories	1
Has Basement	Yes
Basement	None, No Basement

Exterior

Exterior	Concrete, Brick
Exterior Features	Public Transportation, Ravine View, River View, Schools, Shopping Nearby, View Downtown
Roof	Tar & Gravel
Construction	Concrete, Brick
Foundation	Concrete Perimeter

Additional Information

Date Listed	April 16th, 2025
Days on Market	62
Zoning	Zone 13
Condo Fee	\$866

DATA IS DEEMED RELIABLE BUT IS NOT GUARANTEED ACCURATE BY THE REALTORS® ASSOCIATION OF EDMONTON. COPYRIGHT 2025 BY THE REALTORS® ASSOCIATION OF EDMONTON. ALL RIGHTS RESERVED. Trademarks are owned or controlled by the Canadian Real Estate Association (CREA) and identify real estate professionals who are members of CREA (REALTOR®, REALTORS®) and/or the quality of services they provide (MLS®, Multiple Listing Service®)

Listing information last updated on June 17th, 2025 at 7:17am MDT