

Courtesy Of Sara Trenn Of Century 21 Masters

\$249,900 - 4783 35 Avenue, Edmonton

MLS® #E4431719

\$249,900

3 Bedroom, 1.5 Bathroom, 1,162 sqft

Condo / Townhouse on 0.00 Acres

Minchau, Edmonton, AB

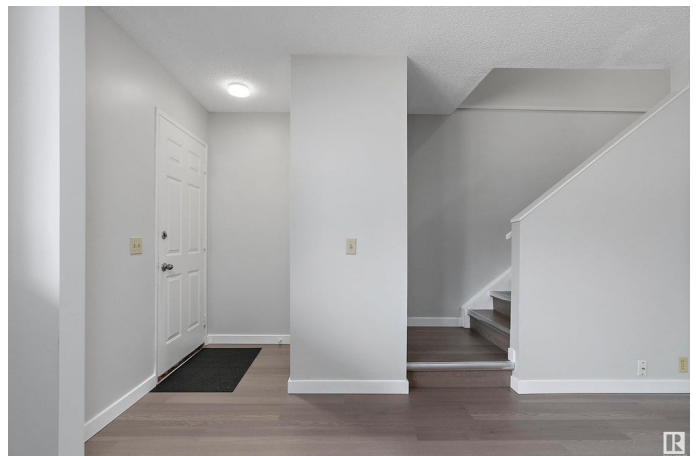
BEAUTIFUL NEWLY RENOVATED, MOVE-IN READY 3 bedroom & 1.5 bathroom townhouse in the family-friendly community of Minchau in southeast Edmonton. You'll love the modern BRAND NEW laminate flooring throughout (NO CARPET), gorgeous NEW TIMELESS KITCHEN with full height white cabinetry, new appliances, FRESHLY PAINTED throughout, updated bathrooms & light fixtures & a NEWER HOT WATER TANK. With over 1160 sq.ft & TWO PARKING STALLS, this home is perfect for first-time homebuyers & investors and is situated close to schools, public transit, all amenities & easy access to the Henday & the Whitemud. The main floor features a spacious bright living room with a large window & flows nicely into the dining room. Rounding off the main floor is a gorgeous kitchen, 2pc bath & access to your FENCED backyard. Upstairs is a HUGE primary bedroom which can easily accommodate a king size bed, 2 additional large bedrooms & a 4pc bath. And the basement offers a rec room & separate laundry room & storage. *Virtually staged*

Built in 1981

Essential Information

MLS® # E4431719

Price \$249,900



Bedrooms	3
Bathrooms	1.50
Full Baths	1
Half Baths	1
Square Footage	1,162
Acres	0.00
Year Built	1981
Type	Condo / Townhouse
Sub-Type	Townhouse
Style	2 Storey
Status	Active

Community Information

Address	4783 35 Avenue
Area	Edmonton
Subdivision	Minchau
City	Edmonton
County	ALBERTA
Province	AB
Postal Code	T6L 3P8

Amenities

Amenities	No Animal Home, No Smoking Home
Parking	2 Outdoor Stalls, Stall

Interior

Appliances	Dishwasher-Built-In, Dryer, Microwave Hood Fan, Refrigerator, Stove-Electric, Washer
Heating	Forced Air-2, Natural Gas
Stories	3
Has Basement	Yes
Basement	Full, Partially Finished

Exterior

Exterior	Wood, Vinyl
Exterior Features	Back Lane, Fenced, Landscaped, Low Maintenance Landscape, Playground Nearby, Public Transportation, Schools, Shopping Nearby
Roof	Asphalt Shingles
Construction	Wood, Vinyl

Foundation Concrete Perimeter

Additional Information

Date Listed April 18th, 2025
Days on Market 12
Zoning Zone 29
Condo Fee \$343

DATA IS DEEMED RELIABLE BUT IS NOT GUARANTEED ACCURATE BY THE REALTORS® ASSOCIATION OF EDMONTON. COPYRIGHT 2025 BY THE REALTORS® ASSOCIATION OF EDMONTON. ALL RIGHTS RESERVED.Trademarks are owned or controlled by the Canadian Real Estate Association (CREA) and identify real estate professionals who are members of CREA (REALTOR®, REALTORS®) and/or the quality of services they provide (MLS®, Multiple Listing Service®)
Listing information last updated on April 30th, 2025 at 7:47pm MDT