

\$150,000 - 1314 53222 Rge Rd 272, Rural Parkland County

MLS® #E4433713

\$150,000

4 Bedroom, 2.00 Bathroom, 1,509 sqft

Land Lease Community on 0.00 Acres

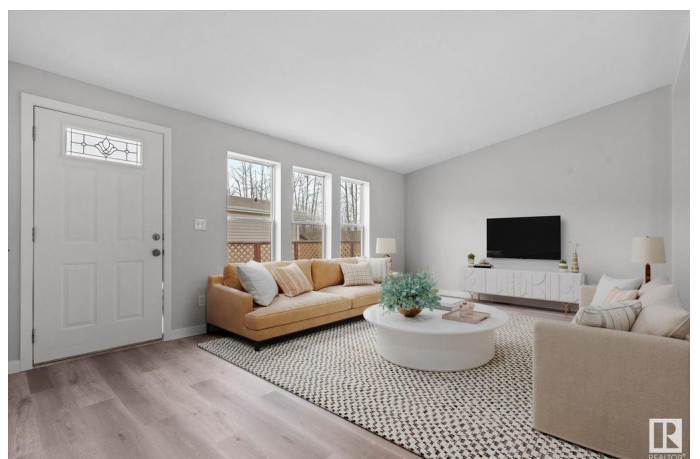
Parkland Village, Rural Parkland County, AB

Welcome to this spacious and freshly renovated 1,509 sq ft mobile home located in the vibrant community of Parkland Village. With 4 bedrooms and 2 bathrooms, this home offers plenty of space for families, first-time buyers, or anyone looking for affordable, move-in-ready living. Inside, you'll find a bright, open layout with brand new flooring, trim, baseboards, and fresh paint throughout. The kitchen features a gas stove and opens to a cozy dining and living space. The primary bedroom is a relaxing retreat, with a walk-in closet, large soaker tub, and a separate stand-up shower in the private ensuite. 3 additional bdrms provide flexibility for kids, guests, or a home office. Parkland Village is a well-established, family-oriented community just minutes from Spruce Grove. Residents enjoy access to a K-6 school, parks/playgrounds, walking trails, a convenience store, community events, and even a fire hall. This home blends comfort, space, and value—all in a community that feels like home. *Virtually Staged*

Built in 2007

Essential Information

MLS® # E4433713



| | |
|----------------|------------------------|
| Price | \$150,000 |
| Bedrooms | 4 |
| Bathrooms | 2.00 |
| Full Baths | 2 |
| Square Footage | 1,509 |
| Acres | 0.00 |
| Year Built | 2007 |
| Type | Land Lease Community |
| Sub-Type | Detached Single Family |
| Style | Bungalow |
| Status | Active |

Community Information

| | |
|-------------|-----------------------|
| Address | 1314 53222 Rge Rd 272 |
| Area | Rural Parkland County |
| Subdivision | Parkland Village |
| City | Rural Parkland County |
| County | ALBERTA |
| Province | AB |
| Postal Code | T7X 4M3 |

Amenities

| | |
|---------|-------------------------------|
| Parking | Front Drive Access, No Garage |
|---------|-------------------------------|

Interior

| | |
|-------------------|---|
| Interior Features | ensuite bathroom |
| Appliances | Dishwasher-Built-In, Dryer, Hood Fan, Oven-Microwave, Refrigerator, Stove-Gas, Washer |
| Heating | Forced Air-1, Natural Gas |

Exterior

| | |
|--------------|-------|
| Exterior | Wood |
| Construction | Wood |
| Foundation | Block |

Additional Information

| | |
|----------------|---------------|
| Date Listed | May 1st, 2025 |
| Days on Market | 1 |
| Zoning | Zone 70 |

DATA IS DEEMED RELIABLE BUT IS NOT GUARANTEED ACCURATE BY THE REALTORS® ASSOCIATION OF EDMONTON. COPYRIGHT 2025 BY THE REALTORS® ASSOCIATION OF EDMONTON. ALL RIGHTS RESERVED.Trademarks are owned or controlled by the Canadian Real Estate Association (CREA) and identify real estate professionals who are members of CREA (REALTOR®, REALTORS®) and/or the quality of services they provide (MLS®, Multiple Listing Service®)

Listing information last updated on May 2nd, 2025 at 4:32am MDT