

\$430,000 - 11408 91 Street, Edmonton

MLS® #E4434530

\$430,000

5 Bedroom, 3.00 Bathroom, 1,036 sqft

Single Family on 0.00 Acres

Alberta Avenue, Edmonton, AB

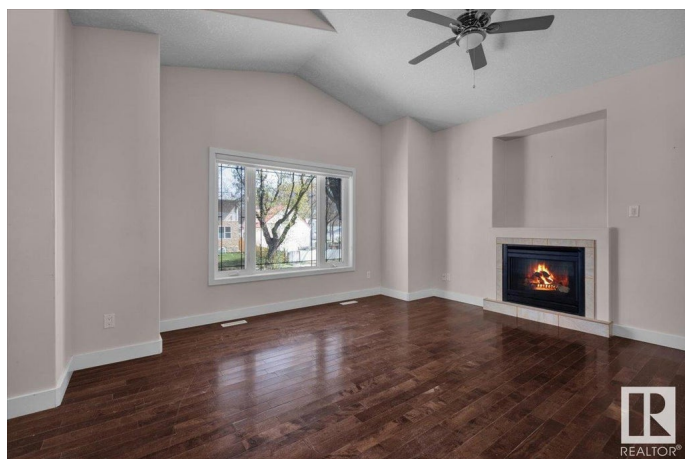
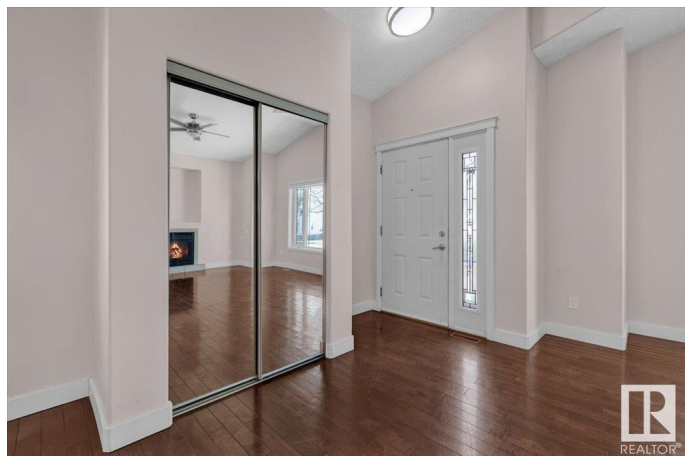
Located on a quiet street close to stadium, LRT and Downtown. Legal basement suite. Main floor features an open floor plan with vaulted ceilings, hardwood floors, gas fireplace, 3 bedrooms and 2 full bathrooms. Basement features large windows, 2 bedrooms, full bath and large living area. Separate laundry and furnaces for each suite. Double detached garage. Good value! For more details please visit the REALTOR®'s Website.

Built in 2012

Essential Information

| | |
|----------------|------------------------|
| MLS® # | E4434530 |
| Price | \$430,000 |
| Bedrooms | 5 |
| Bathrooms | 3.00 |
| Full Baths | 3 |
| Square Footage | 1,036 |
| Acres | 0.00 |
| Year Built | 2012 |
| Type | Single Family |
| Sub-Type | Detached Single Family |
| Style | Bi-Level |
| Status | Active |

Community Information



| | |
|-------------|-----------------|
| Address | 11408 91 Street |
| Area | Edmonton |
| Subdivision | Alberta Avenue |
| City | Edmonton |
| County | ALBERTA |
| Province | AB |
| Postal Code | T5B 4A5 |

Amenities

| | |
|----------------|------------------------------|
| Amenities | Vaulted Ceiling, See Remarks |
| Parking Spaces | 4 |
| Parking | Double Garage Detached |

Interior

| | |
|-------------------|-----------------------------------------------------------------------------------------------------------|
| Interior Features | ensuite bathroom |
| Appliances | Dishwasher-Built-In, Garage Control, Garage Opener, Dryer-Two, Refrigerators-Two, Stoves-Two, Washers-Two |
| Heating | Forced Air-1, Natural Gas |
| Fireplace | Yes |
| Fireplaces | Mantel |
| Stories | 2 |
| Has Suite | Yes |
| Has Basement | Yes |
| Basement | Full, Finished |

Exterior

| | |
|-------------------|--------------------------------------------------------------------|
| Exterior | Wood, Stucco |
| Exterior Features | Back Lane, Fenced, Public Transportation, Schools, Shopping Nearby |
| Roof | Asphalt Shingles |
| Construction | Wood, Stucco |
| Foundation | Concrete Perimeter |

School Information

| | |
|------------|--------------------------|
| Elementary | Norwood/St. Alphonsus |
| Middle | Spruce Ave/St. Catherine |
| High | Victoria/St. Joseph |

Additional Information

| | |
|-------------|---------------|
| Date Listed | May 5th, 2025 |
|-------------|---------------|

Days on Market 57

Zoning Zone 05

DATA IS DEEMED RELIABLE BUT IS NOT GUARANTEED ACCURATE BY THE REALTORS® ASSOCIATION OF EDMONTON. COPYRIGHT 2025 BY THE REALTORS® ASSOCIATION OF EDMONTON. ALL RIGHTS RESERVED. Trademarks are owned or controlled by the Canadian Real Estate Association (CREA) and identify real estate professionals who are members of CREA (REALTOR®, REALTORS®) and/or the quality of services they provide (MLS®, Multiple Listing Service®)

Listing information last updated on July 1st, 2025 at 12:02pm MDT