

## \$387,000 - 4516 55 Avenue, Lamont

MLS® #E4435352

**\$387,000**

5 Bedroom, 2.50 Bathroom, 1,125 sqft

Single Family on 0.00 Acres

Lamont, Lamont, AB

Welcome Home! This stunning bi-level home offers 5 spacious bedrooms, 2.5 bathrooms, & sits on a massive lot with an oversized 23'1.937" x 21'1" double garage. Thoughtfully updated throughout, this home is move-in ready. You'll love the expansive kitchen and dining area—perfect for family gatherings. The dining area easily accommodates a large table & includes access to the rear deck, ideal for summer BBQs. The bright & inviting living room is filled with natural light from oversized windows, making it a warm, welcoming space to relax or entertain. The main level includes three generously sized bedrooms, including a primary suite with a private 2-piece ensuite. Downstairs, you'll find a cozy, fully finished basement with two oversized bedrooms, a comfortable laundry area, a 3-piece bathroom, & a bright, spacious family room—perfect for movie nights or a play area. Step outside to enjoy the large backyard with a deck for relaxing & plenty of space for children to play. Newer AC & 2025 Central Vac.

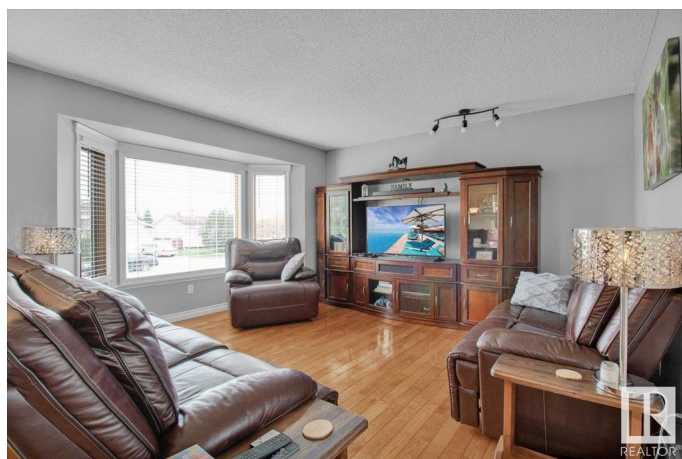
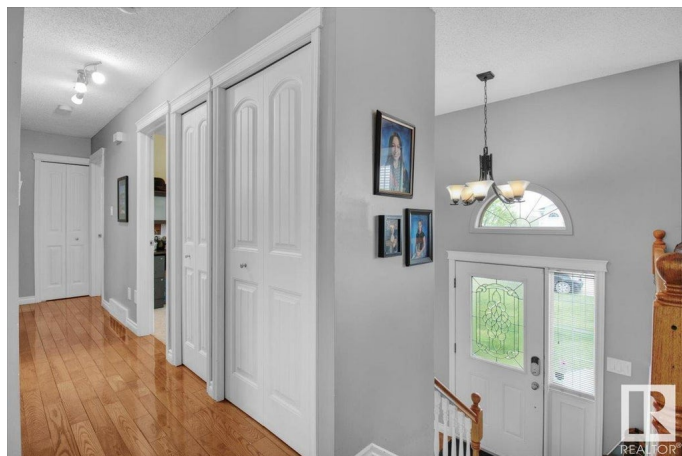
Built in 1992

### Essential Information

MLS® # E4435352

Price \$387,000

Bedrooms 5



Bathrooms	2.50
Full Baths	2
Half Baths	1
Square Footage	1,125
Acres	0.00
Year Built	1992
Type	Single Family
Sub-Type	Detached Single Family
Style	Bi-Level
Status	Active

### Community Information

Address	4516 55 Avenue
Area	Lamont
Subdivision	Lamont
City	Lamont
County	ALBERTA
Province	AB
Postal Code	T0B 2R0

### Amenities

Amenities	Air Conditioner
Parking	Double Garage Detached

### Interior

Interior Features	ensuite bathroom
Appliances	Air Conditioning-Central, Dishwasher-Built-In, Dryer, Oven-Microwave, Refrigerator, Stove-Electric, Vacuum Systems, Washer, Window Coverings
Heating	Forced Air-1, Natural Gas
Stories	2
Has Basement	Yes
Basement	Full, Finished

### Exterior

Exterior	Wood, Vinyl
Exterior Features	Back Lane, Fenced
Roof	Asphalt Shingles
Construction	Wood, Vinyl

Foundation                      Concrete Perimeter

**Additional Information**

Date Listed                      May 8th, 2025

Days on Market                1

Zoning                            Zone 62

DATA IS DEEMED RELIABLE BUT IS NOT GUARANTEED ACCURATE BY THE REALTORS® ASSOCIATION OF EDMONTON. COPYRIGHT 2025 BY THE REALTORS® ASSOCIATION OF EDMONTON. ALL RIGHTS RESERVED.Trademarks are owned or controlled by the Canadian Real Estate Association (CREA) and identify real estate professionals who are members of CREA (REALTOR®, REALTORS®) and/or the quality of services they provide (MLS®, Multiple Listing Service®)

Listing information last updated on May 9th, 2025 at 5:32pm MDT