

\$325,000 - 3380 28a Avenue, Edmonton

MLS® #E4435672

\$325,000

3 Bedroom, 2.50 Bathroom, 1,334 sqft
Condo / Townhouse on 0.00 Acres

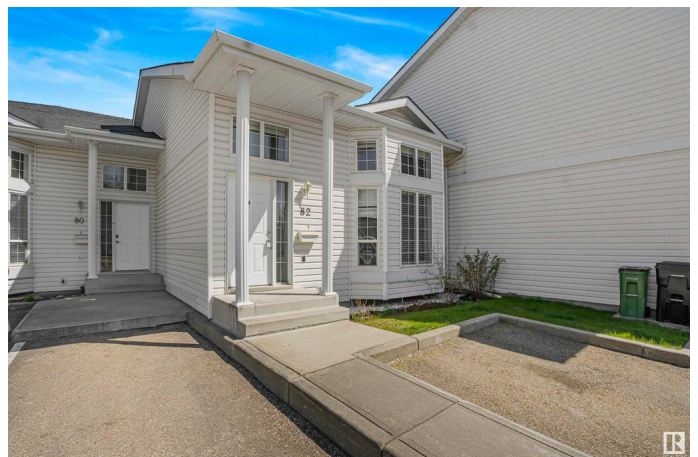
Silver Berry, Edmonton, AB

Welcome Home! Perfect opportunity for first-time home buyers and investors! This well kept 2 + 1 bed 2.5 bath townhouse in family friendly Silverberry neighbourhood offers a spacious 2-storey layout. The main floor features a grand living room with vaulted ceilings and large windows, a dining room perfect for a large table. The sunny kitchen has white cabinets, ample cupboards, and a breakfast nook leading to a private patio/deck. A welcoming entryway and a 2-piece bathroom complete this level. Upstairs, the primary bedroom boasts a walk-through closet to a 4-piece bath, while the second bedroom also has a walk-in closet. The finished basement is complete with living room, 3rd bedroom, 3 pc bath, laundry and ample storage. Enjoy 2 energized parking stalls right in front of the home. Prime location close to major amenities, public transportation, schools, Whitemud drive, and more.

Built in 2003

Essential Information

| | |
|------------|-----------|
| MLS® # | E4435672 |
| Price | \$325,000 |
| Bedrooms | 3 |
| Bathrooms | 2.50 |
| Full Baths | 2 |



| | |
|----------------|-------------------|
| Half Baths | 1 |
| Square Footage | 1,334 |
| Acres | 0.00 |
| Year Built | 2003 |
| Type | Condo / Townhouse |
| Sub-Type | Townhouse |
| Style | 2 Storey |
| Status | Active |

Community Information

| | |
|-------------|-----------------|
| Address | 3380 28a Avenue |
| Area | Edmonton |
| Subdivision | Silver Berry |
| City | Edmonton |
| County | ALBERTA |
| Province | AB |
| Postal Code | T6T 1V4 |

Amenities

| | |
|-----------|-----------------------|
| Amenities | Deck, Parking-Visitor |
| Parking | 2 Outdoor Stalls |

Interior

| | |
|-------------------|---|
| Interior Features | ensuite bathroom |
| Appliances | Dishwasher-Built-In, Dryer, Refrigerator, Stove-Electric, Vacuum System Attachments, Washer, Window Coverings |
| Heating | Forced Air-1, Natural Gas |
| Stories | 3 |
| Has Basement | Yes |
| Basement | Full, Finished |

Exterior

| | |
|-------------------|---|
| Exterior | Wood, Vinyl |
| Exterior Features | Landscaped, Public Transportation, Schools, Shopping Nearby |
| Roof | Asphalt Shingles |
| Construction | Wood, Vinyl |
| Foundation | Concrete Perimeter |

Additional Information

| | |
|----------------|---------------|
| Date Listed | May 9th, 2025 |
| Days on Market | 38 |
| Zoning | Zone 30 |
| Condo Fee | \$308 |

DATA IS DEEMED RELIABLE BUT IS NOT GUARANTEED ACCURATE BY THE REALTORS® ASSOCIATION OF EDMONTON. COPYRIGHT 2025 BY THE REALTORS® ASSOCIATION OF EDMONTON. ALL RIGHTS RESERVED. Trademarks are owned or controlled by the Canadian Real Estate Association (CREA) and identify real estate professionals who are members of CREA (REALTOR®, REALTORS®) and/or the quality of services they provide (MLS®, Multiple Listing Service®)

Listing information last updated on June 16th, 2025 at 3:47am MDT