

\$424,900 - 29 Lester Crescent, St. Albert

MLS® #E4436964

\$424,900

5 Bedroom, 2.50 Bathroom, 1,282 sqft

Single Family on 0.00 Acres

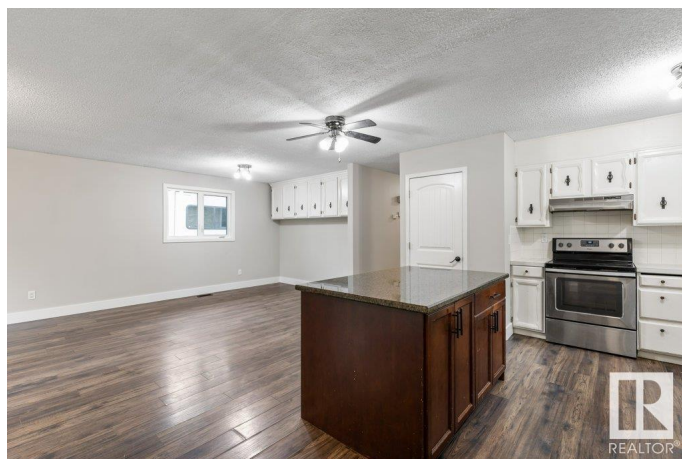
Lacombe Park, St. Albert, AB

Welcome to this spacious 1,281 sq ft fully finished bungalow in desirable Lacombe Park, complete with a double attached garage. The main floor features an open-concept layout with a generous living area, a functional kitchen with ample cabinetry, a large island, and stainless steel appliances. You'll find three well-sized bedrooms, including a primary suite with a 2-piece ensuite, plus convenient main floor laundry. The fully finished basement offers excellent INLAW SUITE with two large bedrooms, a 3-piece bathroom, a spacious living area, and a SECOND FULL KITCHEN with a large island. Step outside to enjoy the beautiful composite deck with gazebo and table—perfect for relaxing or entertaining. Recent upgrades include SHINGLES (2020), WINDOWS(2021), and TWO NEW HOT WATER TANKS (2019). Ideal for investors or multi-generational living. Don't miss this opportunity!

Built in 1973

Essential Information

MLS® #	E4436964
Price	\$424,900
Bedrooms	5
Bathrooms	2.50
Full Baths	2



Half Baths	1
Square Footage	1,282
Acres	0.00
Year Built	1973
Type	Single Family
Sub-Type	Detached Single Family
Style	Bungalow
Status	Active

Community Information

Address	29 Lester Crescent
Area	St. Albert
Subdivision	Lacombe Park
City	St. Albert
County	ALBERTA
Province	AB
Postal Code	T8N 2B9

Amenities

Amenities	Deck, See Remarks
Parking	Double Garage Attached

Interior

Interior Features	ensuite bathroom
Appliances	Dishwasher-Built-In, Dryer, Hood Fan, Refrigerator, Stacked Washer/Dryer, Stove-Electric, Washer, Refrigerators-Two, Stoves-Two, Dishwasher-Two
Heating	Forced Air-1, Natural Gas
Stories	2
Has Basement	Yes
Basement	Full, Finished

Exterior

Exterior	Wood, Stucco
Exterior Features	Fenced, Landscaped, Playground Nearby, Public Transportation, Schools, Shopping Nearby
Roof	Asphalt Shingles
Construction	Wood, Stucco
Foundation	Concrete Perimeter

Additional Information

Date Listed	May 16th, 2025
Days on Market	14
Zoning	Zone 24

DATA IS DEEMED RELIABLE BUT IS NOT GUARANTEED ACCURATE BY THE REALTORS® ASSOCIATION OF EDMONTON. COPYRIGHT 2025 BY THE REALTORS® ASSOCIATION OF EDMONTON. ALL RIGHTS RESERVED.Trademarks are owned or controlled by the Canadian Real Estate Association (CREA) and identify real estate professionals who are members of CREA (REALTOR®, REALTORS®) and/or the quality of services they provide (MLS®, Multiple Listing Service®)

Listing information last updated on May 29th, 2025 at 9:17pm MDT