

## \$379,900 - 412 51 Eldorado Drive, St. Albert

MLS® #E4437651

**\$379,900**

2 Bedroom, 2.00 Bathroom, 1,288 sqft

Condo / Townhouse on 0.00 Acres

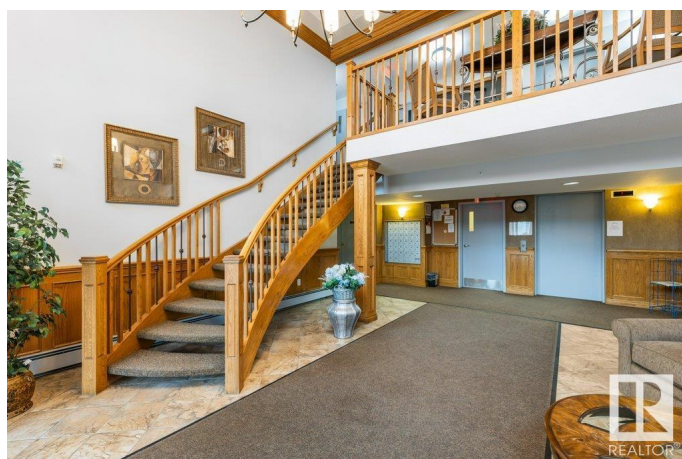
Erin Ridge, St. Albert, AB

This stunning top floor unit, 2-bedroom, 2-bathroom condo offers nearly 1,300 sq ft of stylish, comfortable living PLUS a two car, heated garage! The open floor plan features a charming kitchen with an adjacent dining areaâ€”perfect for intimate mealsâ€”overlooking the spacious living room with a cozy gas fireplace and plenty of windows for an abundance of natural light. The primary suite includes a walk-in closet and private 3 piece ensuite, while the second bedroom is ideal for guests with its own 4 piece bathroom nearby. You'll love the bonus denâ€”great for a home office or reading spaceâ€”and the convenience of in-suite laundry. Step out onto the large, private balcony for fresh air and relaxation. Enjoy the peace of mind and comfort of adult living with close access to walkways, parks & shopping. It truly offers the ideal 55+ living experience at an affordable price making it an absolute must see!

Built in 2004

### Essential Information

MLS® #	E4437651
Price	\$379,900
Bedrooms	2
Bathrooms	2.00



Full Baths	2
Square Footage	1,288
Acres	0.00
Year Built	2004
Type	Condo / Townhouse
Sub-Type	Lowrise Apartment
Style	Single Level Apartment
Status	Active

### Community Information

Address	412 51 Eldorado Drive
Area	St. Albert
Subdivision	Erin Ridge
City	St. Albert
County	ALBERTA
Province	AB
Postal Code	T8N 7E3

### Amenities

Amenities	Ceiling 9 ft., Deck, Exercise Room, Guest Suite, Parking-Visitor, Party Room, Secured Parking, Security Door
Parking	Double Garage Attached, Heated

### Interior

Interior Features	ensuite bathroom
Appliances	Dishwasher-Built-In, Dryer, Garage Control, Garage Opener, Microwave Hood Fan, Refrigerator, Stove-Electric, Washer
Heating	Forced Air-1, Natural Gas
# of Stories	4
Stories	1
Has Basement	Yes
Basement	None, No Basement

### Exterior

Exterior	Wood, Brick, Vinyl
Exterior Features	Landscaped, Public Transportation, Shopping Nearby, See Remarks
Roof	Asphalt Shingles
Construction	Wood, Brick, Vinyl
Foundation	Concrete Perimeter

**Additional Information**

Date Listed	May 21st, 2025
Days on Market	9
Zoning	Zone 24
Condo Fee	\$680

DATA IS DEEMED RELIABLE BUT IS NOT GUARANTEED ACCURATE BY THE REALTORS® ASSOCIATION OF EDMONTON. COPYRIGHT 2025 BY THE REALTORS® ASSOCIATION OF EDMONTON. ALL RIGHTS RESERVED.Trademarks are owned or controlled by the Canadian Real Estate Association (CREA) and identify real estate professionals who are members of CREA (REALTOR®, REALTORS®) and/or the quality of services they provide (MLS®, Multiple Listing Service®)

Listing information last updated on May 29th, 2025 at 11:02pm MDT