

## \$494,450 - 1990 Glenmore Avenue, Sherwood Park

MLS® #E4438395

**\$494,450**

3 Bedroom, 2.50 Bathroom, 1,803 sqft

Single Family on 0.00 Acres

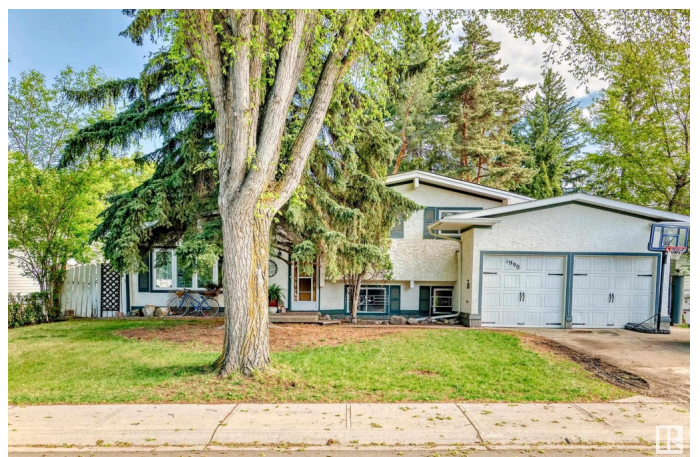
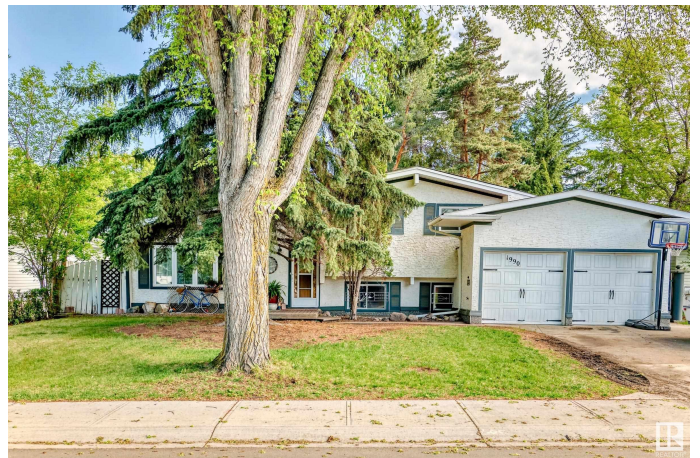
Broadmoor, Sherwood Park, AB

This spacious 3-bedroom home is bursting with potential—and room to grow! With another possible bedroom and living area on the lower level, there's space for the whole crew (plus guests). Enjoy not one, but two living rooms, a cozy fireplace, and a sunny atrium that adds charm and character. The add-on portion of the home does need serious TLC, but with a little vision and some elbow grease, you could turn it into your dream space. Think custom studio, dream kitchen, or even more indoor/outdoor living—your call! Located in a well-established neighbourhood, the massive backyard backs onto your very own private forest. There's even a sweet little shed just waiting to become your art studio, playhouse, or peaceful escape. With separate his and hers office spaces, this home is ready for whatever your life needs next. Make it your own, and bring your dream to life!

Built in 1964

### Essential Information

MLS® #	E4438395
Price	\$494,450
Bedrooms	3
Bathrooms	2.50
Full Baths	2
Half Baths	1



Square Footage	1,803
Acres	0.00
Year Built	1964
Type	Single Family
Sub-Type	Detached Single Family
Style	3 Level Split
Status	Active

### Community Information

Address	1990 Glenmore Avenue
Area	Sherwood Park
Subdivision	Broadmoor
City	Sherwood Park
County	ALBERTA
Province	AB
Postal Code	T8A 2G5

### Amenities

Amenities	Off Street Parking, On Street Parking, Crawl Space, Hot Water Natural Gas, No Smoking Home, Vaulted Ceiling
Parking	Single Garage Attached

### Interior

Interior Features	ensuite bathroom
Appliances	Dishwasher-Built-In, Dryer, Garage Control, Microwave Hood Fan, Oven-Built-In, Refrigerator, Storage Shed, Stove-Countertop Electric, Washer, Window Coverings
Heating	Forced Air-1, Natural Gas
Fireplace	Yes
Fireplaces	Corner
Stories	2
Has Basement	Yes
Basement	None, No Basement

### Exterior

Exterior	Wood, Stucco
Exterior Features	Backs Onto Park/Trees, Fenced, Flat Site, Golf Nearby, Low Maintenance Landscape, No Back Lane, Public Transportation, Schools, Shopping Nearby, Vegetable Garden
Roof	Asphalt Shingles

Construction	Wood, Stucco
Foundation	Concrete Perimeter

**Additional Information**

Date Listed	May 24th, 2025
Days on Market	8
Zoning	Zone 25

DATA IS DEEMED RELIABLE BUT IS NOT GUARANTEED ACCURATE BY THE REALTORS® ASSOCIATION OF EDMONTON. COPYRIGHT 2025 BY THE REALTORS® ASSOCIATION OF EDMONTON. ALL RIGHTS RESERVED.Trademarks are owned or controlled by the Canadian Real Estate Association (CREA) and identify real estate professionals who are members of CREA (REALTOR®, REALTORS®) and/or the quality of services they provide (MLS®, Multiple Listing Service®)

Listing information last updated on June 1st, 2025 at 9:17am MDT