

\$3,100 - 13215 135 Street, Edmonton

MLS® #E4438919

\$3,100

6 Bedroom, 2.00 Bathroom, 1,061 sqft

Rental on 0.00 Acres

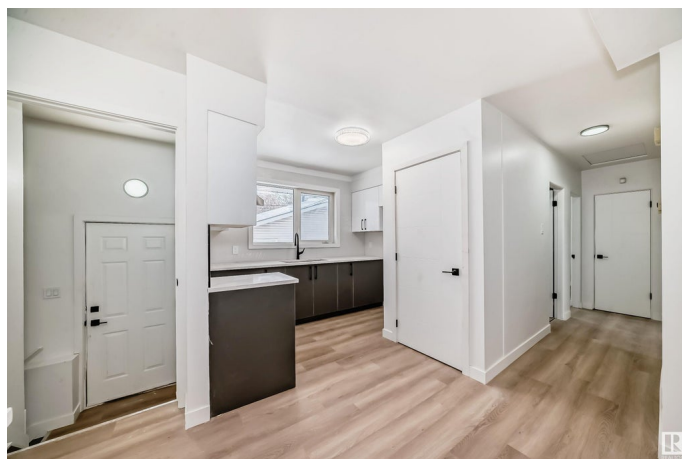
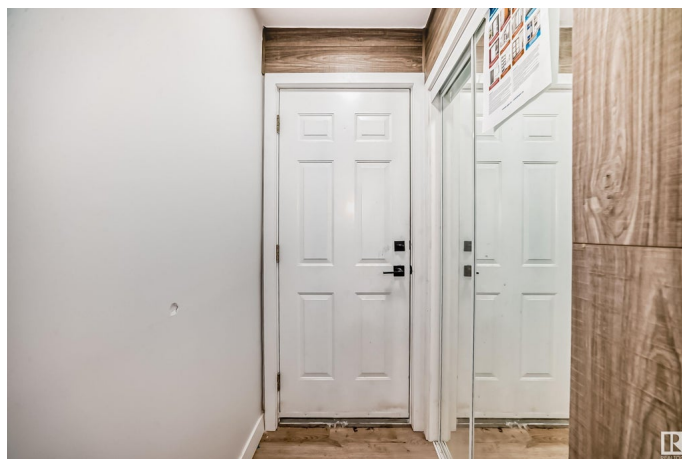
Wellington, Edmonton, AB

Be the first to live in this beautifully renovated 6-bedroom, 2-bath home in the heart of Wellington. This pet-friendly rental offers a modern interior, a massive backyard perfect for entertaining or outdoor activities, and parking for up to 6 vehicles with an oversized double garage and a large rear pad. Inside, you'll find fresh updates throughout, providing a bright, welcoming space for your family. Located within walking distance to Sir John Thompson Catholic Junior High School, McArthur School, and Athlone School, this home is perfect for families with school-aged children. The nearby spray park is the perfect spot for fun on hot summer days. You'll also enjoy easy access to local amenities including grocery stores, parks, restaurants, and public transit. With spacious living, quality updates, and a family-friendly location. Additional features include in-suite laundry, stylish new flooring. This is a rare rental opportunity in a sought-after neighborhood.

Built in 1958

Essential Information

| | |
|-----------|----------|
| MLS® # | E4438919 |
| Price | \$3,100 |
| Bedrooms | 6 |
| Bathrooms | 2.00 |



| | |
|----------------|----------|
| Full Baths | 2 |
| Square Footage | 1,061 |
| Acres | 0.00 |
| Year Built | 1958 |
| Type | Rental |
| Style | Bungalow |
| Status | Active |

Community Information

| | |
|-------------|------------------|
| Address | 13215 135 Street |
| Area | Edmonton |
| Subdivision | Wellington |
| City | Edmonton |
| County | ALBERTA |
| Province | AB |
| Postal Code | T5L 1Y8 |

Amenities

| | |
|---------|--|
| Parking | Double Garage Detached, Parking Pad Cement/Paved |
|---------|--|

Interior

| | |
|------------|--|
| Appliances | Dishwasher-Built-In, Dryer, Refrigerator, Stove-Electric, Washer |
|------------|--|

Additional Information

| | |
|----------------|----------------|
| Date Listed | May 28th, 2025 |
| Days on Market | 19 |
| Zoning | Zone 01 |

DATA IS DEEMED RELIABLE BUT IS NOT GUARANTEED ACCURATE BY THE REALTORS® ASSOCIATION OF EDMONTON. COPYRIGHT 2025 BY THE REALTORS® ASSOCIATION OF EDMONTON. ALL RIGHTS RESERVED.Trademarks are owned or controlled by the Canadian Real Estate Association (CREA) and identify real estate professionals who are members of CREA (REALTOR®, REALTORS®) and/or the quality of services they provide (MLS®, Multiple Listing Service®)

Listing information last updated on June 16th, 2025 at 4:47am MDT