

\$178,300 - 10540 80 Avenue, Edmonton

MLS® #E4439634

\$178,300

1 Bedroom, 1.00 Bathroom, 661 sqft

Condo / Townhouse on 0.00 Acres

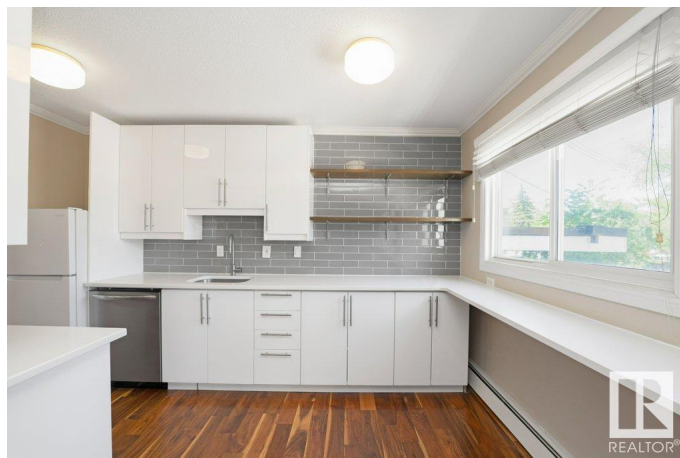
Queen Alexandra, Edmonton, AB

Welcome to this well renovated unit in Golden Ash Manor in the heart of Queen Alexandra. Located just off Whyte Avenue, this stylish and well maintained unit features modern updates and walnut hardwood flooring throughout. The spacious living room has big windows and has a balcony. The kitchen has upgraded high end cabinets, quartz countertop, glass backsplash and stainless steel appliances. The unit includes in-suite laundry and additional storage right by the entrance. This pet-friendly building offers peace of mind with lower monthly condo fees, making it a fantastic option for students, professionals, or investors. With public transit, shops, restaurants, and the University of Alberta all within walking distance, convenience meets comfort in this move-in-ready home.

Built in 1968

Essential Information

| | |
|----------------|-----------|
| MLS® # | E4439634 |
| Price | \$178,300 |
| Bedrooms | 1 |
| Bathrooms | 1.00 |
| Full Baths | 1 |
| Square Footage | 661 |
| Acres | 0.00 |
| Year Built | 1968 |



| | |
|----------|------------------------|
| Type | Condo / Townhouse |
| Sub-Type | Lowrise Apartment |
| Style | Single Level Apartment |
| Status | Active |

Community Information

| | |
|-------------|-----------------|
| Address | 10540 80 Avenue |
| Area | Edmonton |
| Subdivision | Queen Alexandra |
| City | Edmonton |
| County | ALBERTA |
| Province | AB |
| Postal Code | T6E 1V3 |

Amenities

| | |
|-----------|--------------------------------|
| Amenities | Parking-Visitor, Vinyl Windows |
| Parking | Stall |

Interior

| | |
|--------------|--|
| Appliances | Dishwasher-Built-In, Euro Washer/Dryer Combo, Microwave Hood Fan, Refrigerator, Stove-Electric |
| Heating | Hot Water, Natural Gas |
| # of Stories | 4 |
| Stories | 1 |
| Has Basement | Yes |
| Basement | None, No Basement |

Exterior

| | |
|-------------------|--|
| Exterior | Wood, Brick, Vinyl |
| Exterior Features | Playground Nearby, Public Transportation, Schools, Shopping Nearby |
| Roof | Asphalt Shingles |
| Construction | Wood, Brick, Vinyl |
| Foundation | Concrete Perimeter |

Additional Information

| | |
|----------------|----------------|
| Date Listed | May 30th, 2025 |
| Days on Market | 17 |
| Zoning | Zone 15 |
| Condo Fee | \$380 |

DATA IS DEEMED RELIABLE BUT IS NOT GUARANTEED ACCURATE BY THE REALTORS® ASSOCIATION OF EDMONTON. COPYRIGHT 2025 BY THE REALTORS® ASSOCIATION OF EDMONTON. ALL RIGHTS RESERVED.Trademarks are owned or controlled by the Canadian Real Estate Association (CREA) and identify real estate professionals who are members of CREA (REALTOR®, REALTORS®) and/or the quality of services they provide (MLS®, Multiple Listing Service®)

Listing information last updated on June 16th, 2025 at 4:02am MDT