

\$109,900 - 610 Calahoo Road, Spruce Grove

MLS® #E4440405

\$109,900

1 Bedroom, 1.00 Bathroom, 389 sqft

Condo / Townhouse on 0.00 Acres

City Centre, Spruce Grove, AB

Check out this cute studio style apartment, located steps from the Heritage Trail system, and many amenities. It's a great space to have as a rental, or a first home. Maybe you're only in town a couple days a month and don't need much space. A Murphy/wall bed would be perfect in here. This unit also features insuite laundry (with a brand new washer and dryer), and the building has a fitness room. A MUST see!!

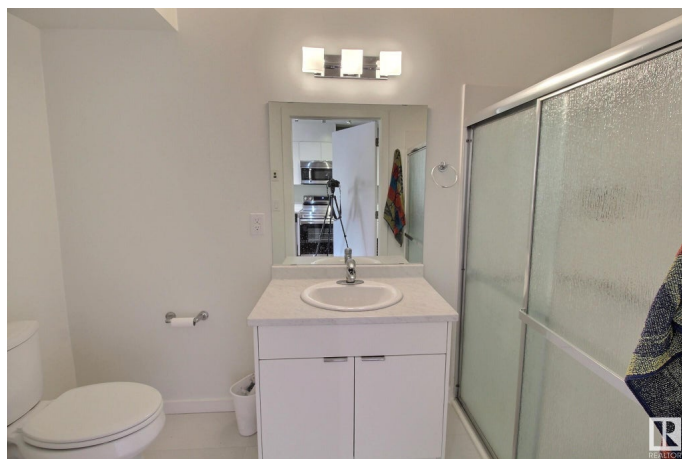
Built in 2016

Essential Information

MLS® #	E4440405
Price	\$109,900
Bedrooms	1
Bathrooms	1.00
Full Baths	1
Square Footage	389
Acres	0.00
Year Built	2016
Type	Condo / Townhouse
Sub-Type	Lowrise Apartment
Style	Single Level Apartment
Status	Active

Community Information

Address 610 Calahoo Road



Area	Spruce Grove
Subdivision	City Centre
City	Spruce Grove
County	ALBERTA
Province	AB
Postal Code	T7X 1R1

Amenities

Amenities	Detectors Smoke, Exercise Room, Parking-Plug-Ins, Parking-Visitor, Patio, Security Door
Parking	Stall

Interior

Appliances	Dishwasher-Built-In, Dryer, Microwave Hood Fan, Refrigerator, Stove-Electric, Washer
Heating	Baseboard, Electric
# of Stories	4
Stories	1
Has Basement	Yes
Basement	None, No Basement

Exterior

Exterior	Wood, Vinyl
Exterior Features	No Through Road, Picnic Area, Playground Nearby, Public Transportation, Schools, Shopping Nearby
Roof	Asphalt Shingles
Construction	Wood, Vinyl
Foundation	Concrete Perimeter

Additional Information

Date Listed	June 2nd, 2025
Days on Market	14
Zoning	Zone 91
Condo Fee	\$248

DATA IS DEEMED RELIABLE BUT IS NOT GUARANTEED ACCURATE BY THE REALTORS® ASSOCIATION OF EDMONTON. COPYRIGHT 2025 BY THE REALTORS® ASSOCIATION OF EDMONTON. ALL RIGHTS RESERVED. Trademarks are owned or controlled by the Canadian Real Estate Association (CREA) and identify real estate professionals who are members of CREA (REALTOR®, REALTORS®) and/or the quality of services they provide (MLS®, Multiple Listing Service®)

Listing information last updated on June 16th, 2025 at 7:02am MDT