

## \$239,000 - 1102 9707 105 Street, Edmonton

MLS® #E4441181

**\$239,000**

2 Bedroom, 2.00 Bathroom, 1,110 sqft  
Condo / Townhouse on 0.00 Acres

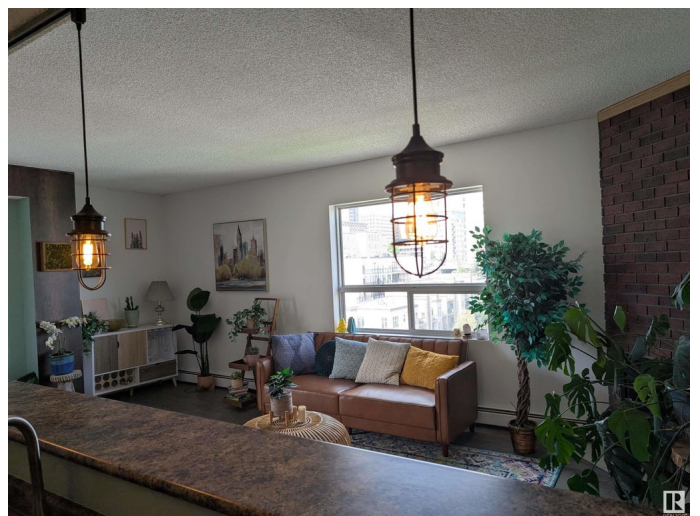
Downtown (Edmonton), Edmonton, AB

Wanting a view of Parliament Grounds, River or just a great west view off 105 Street? This centrally located high rise which is in a great location, 11th floor, corner unit, with two bedrooms (Primary bedroom has two good sized closets as well), 2 full bathrooms, laundry in its own room with space for extra storage. Open concept living space, the living room has a gas fireplace, dining room has great space for a larger table and of course just off the balcony access. Enjoy the large kitchen with plenty of cabinets and an eating bar that makes more space for entertaining. This home also includes access to a well-equipped exercise room, a heated underground parking stall and plenty of visitor parking. The location is very close to the LRT, dining and public transportation. Perfect condo to call your next home or investment property. No restrictions on age and all pets need board approval with no size regulations.

Built in 2003

### Essential Information

MLS® #	E4441181
Price	\$239,000
Bedrooms	2
Bathrooms	2.00
Full Baths	2



Square Footage	1,110
Acres	0.00
Year Built	2003
Type	Condo / Townhouse
Sub-Type	Apartment High Rise
Style	Single Level Apartment
Status	Active

### **Community Information**

Address	1102 9707 105 Street
Area	Edmonton
Subdivision	Downtown (Edmonton)
City	Edmonton
County	ALBERTA
Province	AB
Postal Code	T5K 2Y4

### **Amenities**

Amenities	Deck, Exercise Room
Parking	Underground

### **Interior**

Interior Features	ensuite bathroom
Appliances	Dishwasher-Built-In, Dryer, Microwave Hood Fan, Refrigerator, Stove-Electric
Heating	Baseboard, Natural Gas, Water
Fireplace	Yes
Fireplaces	Corner
# of Stories	13
Stories	1
Has Basement	Yes
Basement	None, No Basement

### **Exterior**

Exterior	Concrete, Brick, Stucco
Exterior Features	Corner Lot, Public Transportation, River Valley View, Schools, Shopping Nearby, View City, View Downtown
Roof	Metal
Construction	Concrete, Brick, Stucco

Foundation            Concrete Perimeter

**Additional Information**

Date Listed            June 7th, 2025

Days on Market      10

Zoning                Zone 12

Condo Fee            \$729

DATA IS DEEMED RELIABLE BUT IS NOT GUARANTEED ACCURATE BY THE REALTORS® ASSOCIATION OF EDMONTON. COPYRIGHT 2025 BY THE REALTORS® ASSOCIATION OF EDMONTON. ALL RIGHTS RESERVED. Trademarks are owned or controlled by the Canadian Real Estate Association (CREA) and identify real estate professionals who are members of CREA (REALTOR®, REALTORS®) and/or the quality of services they provide (MLS®, Multiple Listing Service®)

Listing information last updated on June 17th, 2025 at 5:32am MDT