

## \$449,900 - 2126 Maple Road, Edmonton

MLS® #E4441928

**\$449,900**

3 Bedroom, 2.50 Bathroom, 1,436 sqft

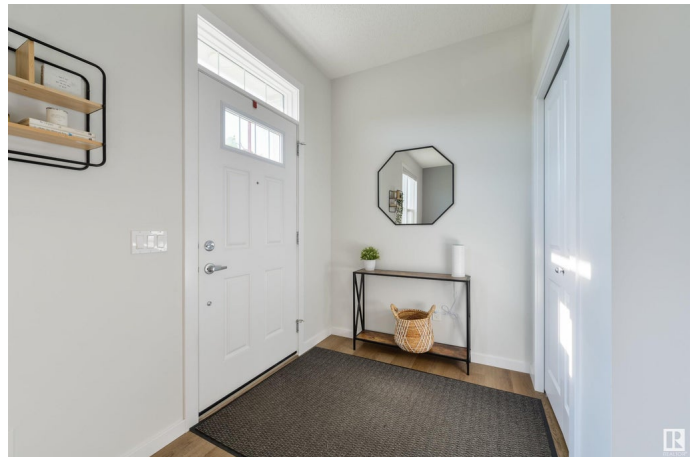
Single Family on 0.00 Acres

Maple Crest, Edmonton, AB

PERFECT FAMILY HOME in MAPLE CREST w/ 1436 sq.ft of developed living space, featuring 3 BEDS, 2.5 BATHS, a DETACHED DOUBLE GARAGE, a SEPARATE ENTRANCE for future basement suite development, & a FULLY FENCED BACKYARD. The main floor features a large kitchen w/ UPGRADED STAINLESS STEEL APPLIANCES + SOFT CLOSE CABINETS + a WALK-IN PANTRY + BREAKFAST NOOK, a COZY LIVING ROOM w/LARGE WINDOWS that let in plenty of natural light, a SPACIOUS DINING AREA, & a 2.5pc BATH. Upstairs you'll find the PRIMARY BEDROOM w/ WALK-IN CLOSET + 4pc ENSUITE, TWO SPARE ROOMS, a second 4pc BATH, & UPSTAIRS LAUNDRY w/ STORAGE SPACE. The basement is UNFINISHED w/ again, a SEPARATE ENTRANCE for future basement suite development. Located close to all the amenities you can think of including, but not limited to: RESTAURANTS, MOVIE THEATRES, CAFES, BANKS, GROCERY STORES, SCHOOLS, SHOPPING, PUBLIC TRANSIT, WALKING TRAILS, & THE MEADOWS COMMUNITY RECREATION CENTRE. Easy access to the WHITEMUD & ANTHONY HENDAY.

Built in 2020

### Essential Information



|                |               |
|----------------|---------------|
| MLS® #         | E4441928      |
| Price          | \$449,900     |
| Bedrooms       | 3             |
| Bathrooms      | 2.50          |
| Full Baths     | 2             |
| Half Baths     | 1             |
| Square Footage | 1,436         |
| Acres          | 0.00          |
| Year Built     | 2020          |
| Type           | Single Family |
| Sub-Type       | Half Duplex   |
| Style          | 2 Storey      |
| Status         | Active        |

### Community Information

|             |                 |
|-------------|-----------------|
| Address     | 2126 Maple Road |
| Area        | Edmonton        |
| Subdivision | Maple Crest     |
| City        | Edmonton        |
| County      | ALBERTA         |
| Province    | AB              |
| Postal Code | T6T 2L6         |

### Amenities

|           |   |
|-----------|---|
| Amenities | On Street Parking, Deck, Detectors Smoke, No Smoking Home, HRV System, Natural Gas BBQ Hookup |
| Parking   | Double Garage Detached  |

### Interior

|                   |  |
|-------------------|--|
| Interior Features | ensuite bathroom   |
| Appliances        | Dishwasher-Built-In, Dryer, Microwave Hood Fan, Refrigerator, Stove-Electric, Washer, Window Coverings |
| Heating           | Forced Air-1, Natural Gas  |
| Stories           | 2  |
| Has Basement      | Yes  |
| Basement          | Full, Unfinished   |

### Exterior

|          |             |
|----------|-------------|
| Exterior | Wood, Vinyl |
|----------|-------------|

|                   |  |
|-------------------|--|
| Exterior Features | Back Lane, Fenced, Golf Nearby, Landscaped, Low Maintenance Landscape, Paved Lane, Playground Nearby, Public Transportation, Schools, Shopping Nearby, See Remarks |
| Roof              | Asphalt Shingles   |
| Construction      | Wood, Vinyl  |
| Foundation        | Concrete Perimeter   |

**Additional Information**

|                |                 |
|----------------|-----------------|
| Date Listed    | June 12th, 2025 |
| Days on Market | 4               |
| Zoning         | Zone 30         |

DATA IS DEEMED RELIABLE BUT IS NOT GUARANTEED ACCURATE BY THE REALTORS® ASSOCIATION OF EDMONTON. COPYRIGHT 2025 BY THE REALTORS® ASSOCIATION OF EDMONTON. ALL RIGHTS RESERVED.Trademarks are owned or controlled by the Canadian Real Estate Association (CREA) and identify real estate professionals who are members of CREA (REALTOR®, REALTORS®) and/or the quality of services they provide (MLS®, Multiple Listing Service®)

Listing information last updated on June 16th, 2025 at 4:02am MDT