

\$565,000 - 112 Cornwall Road, Sherwood Park

MLS® #E4442096

\$565,000

4 Bedroom, 3.00 Bathroom, 1,455 sqft

Single Family on 0.00 Acres

Lakeland Ridge, Sherwood Park, AB

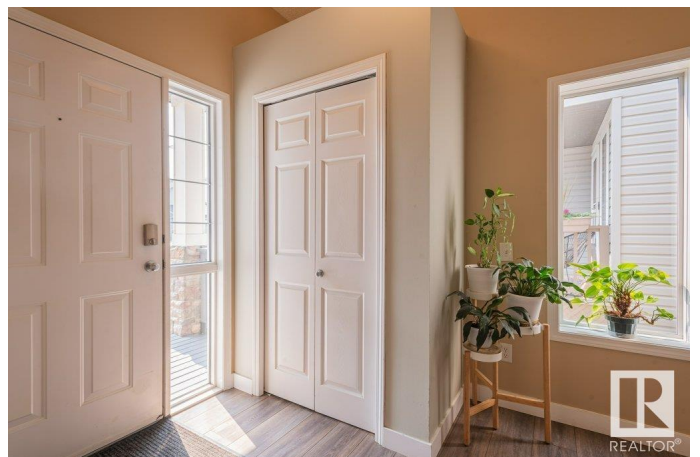
Perfectly located for a growing family, this beautifully maintained bi-level offers 4 bedrooms and 3 full bathrooms, just a 5-minute walk to schools and parks. Inside, the spacious great room welcomes you with vaulted ceilings and a cozy corner gas fireplace—ideal for relaxing evenings or lively family gatherings. The kitchen offers an abundance of cabinets, a large island with granite counters, and plenty of space for meal prep and connection. The primary bedroom features a walk-in closet and private ensuite for added comfort. Downstairs, enjoy a finished basement with a refreshment bar in the games room—large enough for a pool table. A warm family room with a wood-burning fireplace adds charm, along with a tucked-away corner desk space for remote work or homework. Outside, the fenced backyard is ready for kids and pets to play. This is a home that's been loved, cared for, and designed with lifestyle in mind. A must-see for families looking to put down roots in Sherwood Park.

Built in 2002

Essential Information

MLS® # E4442096

Price \$565,000



Bedrooms	4
Bathrooms	3.00
Full Baths	3
Square Footage	1,455
Acres	0.00
Year Built	2002
Type	Single Family
Sub-Type	Detached Single Family
Style	Bi-Level
Status	Active

Community Information

Address	112 Cornwall Road
Area	Sherwood Park
Subdivision	Lakeland Ridge
City	Sherwood Park
County	ALBERTA
Province	AB
Postal Code	T8A 2L4

Amenities

Amenities	Ceiling 10 ft., Ceiling 9 ft., Deck, Vaulted Ceiling, 9 ft. Basement Ceiling
Parking	Double Garage Attached

Interior

Interior Features	ensuite bathroom
Appliances	Dishwasher-Built-In, Dryer, Hood Fan, Refrigerator, Stove-Electric, Washer, Window Coverings
Heating	Forced Air-1, Natural Gas
Fireplace	Yes
Fireplaces	Corner
Stories	2
Has Basement	Yes
Basement	Full, Finished

Exterior

Exterior	Wood, Vinyl
Exterior Features	Fenced, Golf Nearby, Playground Nearby, Public Transportation, Schools, Shopping Nearby

Roof	Asphalt Shingles
Construction	Wood, Vinyl
Foundation	Concrete Perimeter

School Information

Elementary	Lakeland Ridge School
Middle	Lakeland Ridge School
High	Salisbury Comp School

Additional Information

Date Listed	June 12th, 2025
Days on Market	4
Zoning	Zone 25

DATA IS DEEMED RELIABLE BUT IS NOT GUARANTEED ACCURATE BY THE REALTORS® ASSOCIATION OF EDMONTON. COPYRIGHT 2025 BY THE REALTORS® ASSOCIATION OF EDMONTON. ALL RIGHTS RESERVED. Trademarks are owned or controlled by the Canadian Real Estate Association (CREA) and identify real estate professionals who are members of CREA (REALTOR®, REALTORS®) and/or the quality of services they provide (MLS®, Multiple Listing Service®)

Listing information last updated on June 16th, 2025 at 6:32am MDT