

\$559,000 - 16 54519 Rge Road 273, Rural Sturgeon County

MLS® #E4442616

\$559,000

4 Bedroom, 3.00 Bathroom, 1,498 sqft

Rural on 1.27 Acres

Shil Shol Estate, Rural Sturgeon County, AB

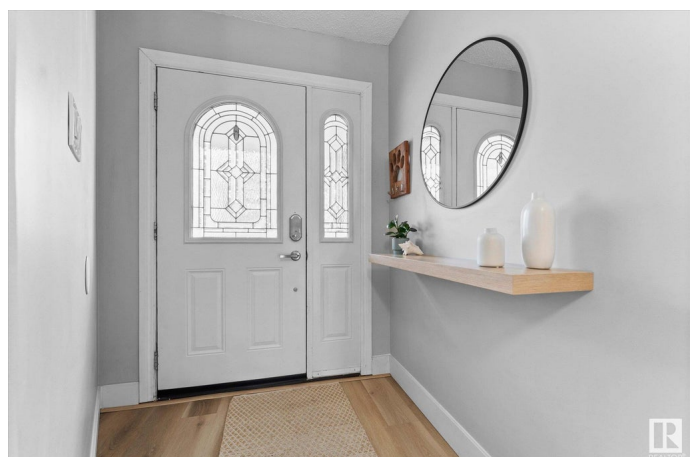
Welcome to 16 Shil Shol Estates, this beautiful 4 bedroom/3 bathroom bungalow is just under 1500sqft, it has been nicely updated & sitting on 1.27 acres. With a double attached garage & a double detached garage! On the main floor, you will enjoy the open concept living with new vinyl plank floors. The kitchen has lots of cabinets & counter space, great for entertaining. The large living room has a gas burning fireplace & room for a sectional. The primary bedroom has a patio door out to the deck where you can enjoy the morning sun, there is a 4p ensuite with a clawfoot tub & a wall in closet. The other 2 bedrooms are a generous sized & the main 4p bath has been updated. Downstairs is 90% complete with a 4th bedroom with wood-burning stove, large rec room, 3p bathroom & lots of storage. Outside is landscaped & fully fenced with a fire pit area with landscaping lights. This property has a drilled well & a cistern, plus a septic tank & field. Other upgrades include: furnace~2020, HWT~2019, shingles 2018.

Built in 1993

Essential Information

MLS® # E4442616

Price \$559,000



| | |
|----------------|------------------------|
| Bedrooms | 4 |
| Bathrooms | 3.00 |
| Full Baths | 3 |
| Square Footage | 1,498 |
| Acres | 1.27 |
| Year Built | 1993 |
| Type | Rural |
| Sub-Type | Detached Single Family |
| Style | Bungalow |
| Status | Active |

Community Information

| | |
|-------------|-----------------------|
| Address | 16 54519 Rge Road 273 |
| Area | Rural Sturgeon County |
| Subdivision | Shil Shol Estate |
| City | Rural Sturgeon County |
| County | ALBERTA |
| Province | AB |
| Postal Code | T8R 1X7 |

Amenities

| | |
|----------|-----------------------------|
| Features | Deck, Hot Water Natural Gas |
|----------|-----------------------------|

Interior

| | |
|-------------------|---------------------------|
| Interior Features | ensuite bathroom |
| Heating | Forced Air-1, Natural Gas |
| Fireplace | Yes |
| Stories | 1 |
| Has Basement | Yes |
| Basement | Full, Partially Finished |

Exterior

| | |
|-------------------|--|
| Exterior | Wood |
| Exterior Features | Fenced, Landscaped, Level Land, Private Setting, Treed Lot |
| Construction | Wood |
| Foundation | Concrete Perimeter |

Additional Information

| | |
|-------------|-----------------|
| Date Listed | June 16th, 2025 |
|-------------|-----------------|

Days on Market 1

Zoning Zone 70

DATA IS DEEMED RELIABLE BUT IS NOT GUARANTEED ACCURATE BY THE REALTORS® ASSOCIATION OF EDMONTON. COPYRIGHT 2025 BY THE REALTORS® ASSOCIATION OF EDMONTON. ALL RIGHTS RESERVED. Trademarks are owned or controlled by the Canadian Real Estate Association (CREA) and identify real estate professionals who are members of CREA (REALTOR®, REALTORS®) and/or the quality of services they provide (MLS®, Multiple Listing Service®)

Listing information last updated on June 17th, 2025 at 11:17am MDT