

## \$885,000 - 10419 133 Street, Edmonton

MLS® #E4442705

**\$885,000**

4 Bedroom, 3.50 Bathroom, 1,859 sqft

Single Family on 0.00 Acres

Glenora, Edmonton, AB

Live the ultimate Edmonton luxury lifestyle in one of the most coveted locations! Nestled just steps to the largest urban park in Canada - the River Valley â€” this stunning architectural home is perfectly located in the community of Glenora. Encompassing 2790sqft (total developed living space), this home lends itself to family living with indoor & outdoor spaces to enjoy - 9ft ceilings on the main floor - 4 bedrooms, 3.5 bathrooms, patios, 2nd level viewing deck, oversized double detached garage & more! Superior design throughout the home â€” attention to detail can be found on every level, luxury finishings (custom design, cabinetry & carpentry throughout), abundance of natural lighting, stunning staircase, floor to ceiling windows offering a seamless flow between outdoor & indoor living, sophisticated primary suite & more indulgences to discover. Top rated schools, play grounds, active community league, cafÃ©s, West Block â€” the perfect family community!

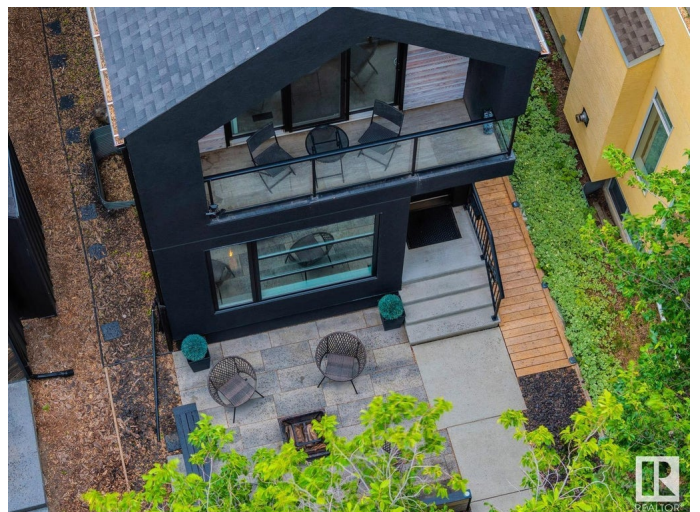
Built in 2017

### Essential Information

MLS® # E4442705

Price \$885,000

Bedrooms 4



Bathrooms	3.50
Full Baths	3
Half Baths	1
Square Footage	1,859
Acres	0.00
Year Built	2017
Type	Single Family
Sub-Type	Detached Single Family
Style	2 Storey
Status	Active

### Community Information

Address	10419 133 Street
Area	Edmonton
Subdivision	Glenora
City	Edmonton
County	ALBERTA
Province	AB
Postal Code	T5N 2A2

### Amenities

Amenities	Air Conditioner, Ceiling 9 ft., Closet Organizers, Detectors Smoke, Patio, Vinyl Windows, Infill Property
Parking Spaces	4
Parking	Double Garage Detached

### Interior

Interior Features	ensuite bathroom
Appliances	Air Conditioning-Central, Dishwasher-Built-In, Dryer, Garage Control, Garage Opener, Hood Fan, Oven-Microwave, Refrigerator, Stove-Gas, Washer, Window Coverings, Wine/Beverage Cooler
Heating	Forced Air-1, Natural Gas
Fireplace	Yes
Fireplaces	Remote Control
Stories	3
Has Basement	Yes
Basement	Full, Finished

### Exterior

Exterior	Wood, Stucco
Exterior Features	Back Lane, Fenced, Flat Site, Golf Nearby, Landscaped, Low Maintenance Landscape, Playground Nearby, Schools, Shopping Nearby
Roof	Asphalt Shingles
Construction	Wood, Stucco
Foundation	Concrete Perimeter

### **School Information**

Elementary	Glenora School
Middle	Westminster School
High	Ross Sheppard School

### **Additional Information**

Date Listed	June 17th, 2025
Zoning	Zone 11

DATA IS DEEMED RELIABLE BUT IS NOT GUARANTEED ACCURATE BY THE REALTORS® ASSOCIATION OF EDMONTON. COPYRIGHT 2025 BY THE REALTORS® ASSOCIATION OF EDMONTON. ALL RIGHTS RESERVED. Trademarks are owned or controlled by the Canadian Real Estate Association (CREA) and identify real estate professionals who are members of CREA (REALTOR®, REALTORS®) and/or the quality of services they provide (MLS®, Multiple Listing Service®)

Listing information last updated on June 17th, 2025 at 6:32pm MDT