

\$479,000 - 2122 85 Street, Edmonton

MLS® #E4442801

\$479,000

3 Bedroom, 2.50 Bathroom, 1,768 sqft

Single Family on 0.00 Acres

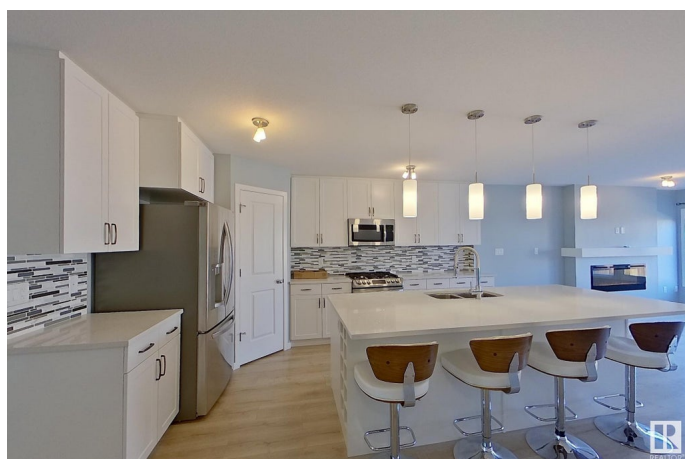
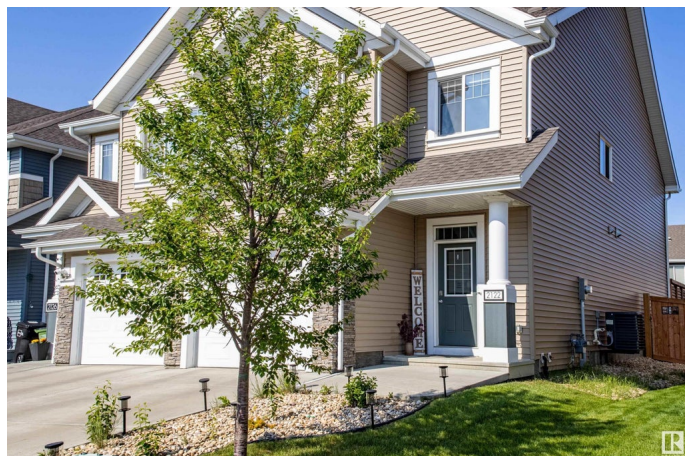
Summerside, Edmonton, AB

Welcome to beautiful Summerside. Enjoy the exclusive Lake Access while owning this beautiful home. Well appointed 2 storey home over 1762 sq ft is located on a family friendly quiet cul-de-sac. Custom built features add to this open thoughtfully laid out home. Open entry leads to the great room. Gourmet kitchen with tons of cabinets and counter space. Gas Stove! Open Living and Dining room. Patio doors lead to the West facing backyard. Fully fenced and landscaped. Upstairs is a spacious bonus room. Three bedrooms. Master suite has walk in closet and full four piece bathroom. Tasteful colors and professionally designed. Move in ready for immediate possession. Single attached garage has extra space for your bicycles. Enjoy the summer.

Built in 2018

Essential Information

MLS® #	E4442801
Price	\$479,000
Bedrooms	3
Bathrooms	2.50
Full Baths	2
Half Baths	1
Square Footage	1,768
Acres	0.00



Year Built	2018
Type	Single Family
Sub-Type	Half Duplex
Style	2 Storey
Status	Active

Community Information

Address	2122 85 Street
Area	Edmonton
Subdivision	Summerside
City	Edmonton
County	ALBERTA
Province	AB
Postal Code	T6X 2J5

Amenities

Amenities	No Smoking Home
Parking Spaces	2
Parking	Single Garage Attached

Interior

Interior Features	ensuite bathroom
Appliances	Air Conditioning-Central, Dishwasher-Built-In, Dryer, Garage Opener, Microwave Hood Fan, Refrigerator, Stove-Gas, Washer, Window Coverings
Heating	Forced Air-1, Natural Gas
Stories	2
Has Basement	Yes
Basement	Full, Unfinished

Exterior

Exterior	Wood, Brick, Vinyl
Exterior Features	Fenced, Landscaped
Roof	Asphalt Shingles
Construction	Wood, Brick, Vinyl
Foundation	Concrete Perimeter

Additional Information

Date Listed	June 16th, 2025
-------------	-----------------

Days on Market	2
Zoning	Zone 53
HOA Fees	200
HOA Fees Freq.	Annually

DATA IS DEEMED RELIABLE BUT IS NOT GUARANTEED ACCURATE BY THE REALTORS® ASSOCIATION OF EDMONTON. COPYRIGHT 2025 BY THE REALTORS® ASSOCIATION OF EDMONTON. ALL RIGHTS RESERVED. Trademarks are owned or controlled by the Canadian Real Estate Association (CREA) and identify real estate professionals who are members of CREA (REALTOR®, REALTORS®) and/or the quality of services they provide (MLS®, Multiple Listing Service®)

Listing information last updated on June 18th, 2025 at 8:32am MDT