

# \$5,000,000 - 15 Hwy 88 Ave, Fort Saskatchewan

MLS® #E4442861

**\$5,000,000**

0 Bedroom, 0.00 Bathroom,  
Land Commercial on 0.00 Acres

Light Industrial Park, Fort Saskatchewan, AB

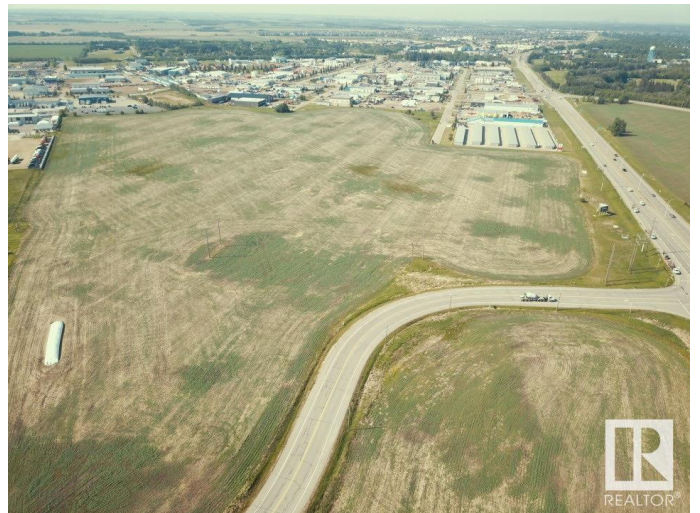
Incredible Development Opportunity! Prime 63.43-acre parcel located at the corner of Hwy 15 and 88 Ave in Fort Saskatchewan. This high-exposure property offers tremendous frontage and visibility in a rapidly growing area. Zoned Light Industrial District and designated as Major Employment Lands in the municipal development plan, it's ideally positioned for industrial or commercial development. Rare chance to invest in one of the region's most strategic locations with easy access to major transportation routes.

## Essential Information

MLS® #	E4442861
Price	\$5,000,000
Bathrooms	0.00
Acres	0.00
Type	Land Commercial
Status	Active

## Community Information

Address	15 Hwy 88 Ave
Area	Fort Saskatchewan
Subdivision	Light Industrial Park
City	Fort Saskatchewan
County	ALBERTA
Province	AB



Postal Code            T8L 1I1

**Additional Information**

Date Listed            June 17th, 2025  
Days on Market       48  
Zoning                 Zone 62

DATA IS DEEMED RELIABLE BUT IS NOT GUARANTEED ACCURATE BY THE REALTORS® ASSOCIATION OF EDMONTON. COPYRIGHT 2025 BY THE REALTORS® ASSOCIATION OF EDMONTON. ALL RIGHTS RESERVED.Trademarks are owned or controlled by the Canadian Real Estate Association (CREA) and identify real estate professionals who are members of CREA (REALTOR®, REALTORS®) and/or the quality of services they provide (MLS®, Multiple Listing Service®)  
Listing information last updated on August 4th, 2025 at 2:17am MDT