

\$410,900 - 16 Aralia Cove, Spruce Grove

MLS® #E4443374

\$410,900

3 Bedroom, 3.50 Bathroom, 1,251 sqft

Single Family on 0.00 Acres

Jesperdale, Spruce Grove, AB

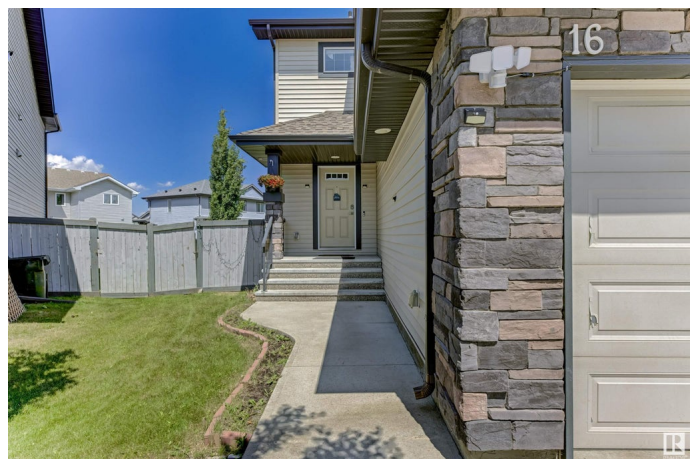
Welcome to this stunning 2-storey duplex-a former show home that still radiates show home quality. As you step into the spacious front foyer, you're immediately welcomed by the upscale finishes and thoughtful layout. The open-concept main floor boasts a gorgeous kitchen featuring abundance of cabinetry, a corner pantry, sleek stainless S. appliances, and dazzling white granite countertops with subtle sparkle. The living room is bright and airy with a large north-facing window that floods the space with natural light. The generous dining area is perfect for family gatherings and provides patio access for easy BBQs and entertaining. You'll also find a convenient 2-piece bathroom and main floor laundry. Upstairs, you'll discover TWO MASSIVE BEDROOMS, each with its own walk-in closet and private ensuite. The basement is nearly finished, offering a third bedroom, a home office/den, and a full 4-piece bathroom, enjoy the beautifully landscaped backyard with trees, shrubs, and a large fenced dog run.

Built in 2014

Essential Information

MLS® # E4443374

Price \$410,900



Bedrooms	3
Bathrooms	3.50
Full Baths	3
Half Baths	1
Square Footage	1,251
Acres	0.00
Year Built	2014
Type	Single Family
Sub-Type	Half Duplex
Style	2 Storey
Status	Active

Community Information

Address	16 Aralia Cove
Area	Spruce Grove
Subdivision	Jesperdale
City	Spruce Grove
County	ALBERTA
Province	AB
Postal Code	T7X 0V4

Amenities

Amenities	Air Conditioner, Carbon Monoxide Detectors, Deck, Detectors Smoke, No Animal Home, No Smoking Home
Parking	Single Garage Attached

Interior

Interior Features	ensuite bathroom
Appliances	Air Conditioning-Central, Dishwasher-Built-In, Dryer, Garage Control, Garage Opener, Microwave Hood Fan, Refrigerator, Stove-Electric, Washer, Window Coverings
Heating	Forced Air-1, Natural Gas
Stories	3
Has Basement	Yes
Basement	Full, Finished

Exterior

Exterior	Wood, Vinyl
Exterior Features	Cul-De-Sac, Fenced, Golf Nearby, Landscaped, Schools

Roof	Asphalt Shingles
Construction	Wood, Vinyl
Foundation	Concrete Perimeter

Additional Information

Date Listed	June 19th, 2025
Days on Market	28
Zoning	Zone 91

DATA IS DEEMED RELIABLE BUT IS NOT GUARANTEED ACCURATE BY THE REALTORS® ASSOCIATION OF EDMONTON. COPYRIGHT 2025 BY THE REALTORS® ASSOCIATION OF EDMONTON. ALL RIGHTS RESERVED.Trademarks are owned or controlled by the Canadian Real Estate Association (CREA) and identify real estate professionals who are members of CREA (REALTOR®, REALTORS®) and/or the quality of services they provide (MLS®, Multiple Listing Service®)

Listing information last updated on July 17th, 2025 at 2:47pm MDT