

# \$299,900 - Twp 532a Rr 275, Rural Parkland County

MLS® #E4444180

**\$299,900**

0 Bedroom, 0.00 Bathroom,  
Rural on 14.58 Acres

None, Rural Parkland County, AB

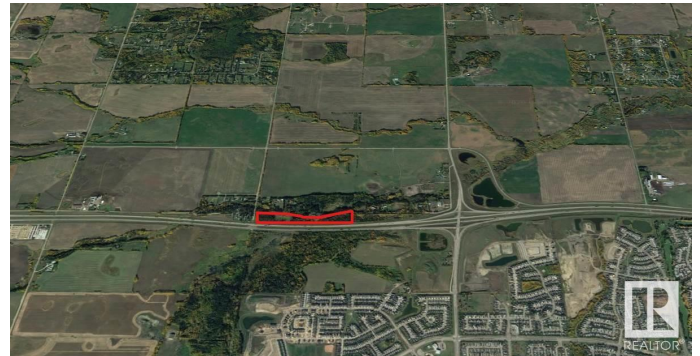
14.58 Acres â€“ Treed Land with Huge Potential A rare 14.58-acre parcel packed with mature trees for privacy and natural beauty. Set at the end of a quiet dead-end road, this property also borders the Yellowhead Highway for unbeatable access. Just one mile west of the Jennifer Heil Way turnoff into Spruce Grove. Perfect for a private retreat, future development, or a smart investment. Priced to move.

## Essential Information

MLS® #	E4444180
Price	\$299,900
Bathrooms	0.00
Acres	14.58
Type	Rural
Sub-Type	Vacant Lot/Land
Status	Active

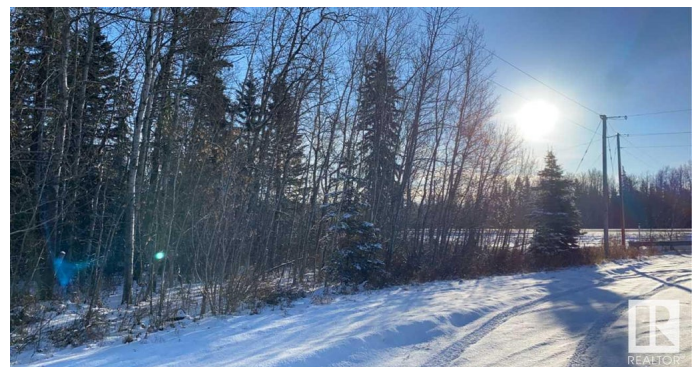
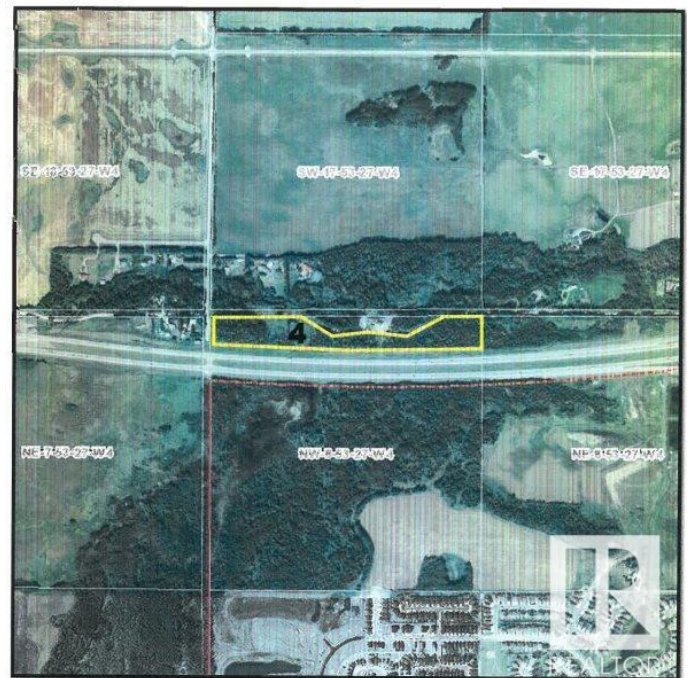
## Community Information

Address	Twp 532a Rr 275
Area	Rural Parkland County
Subdivision	None
City	Rural Parkland County
County	ALBERTA
Province	AB
Postal Code	T7Y 1A3



Alberta  
Infrastructure

S8407 - Site Map



**Exterior**

Exterior Features    Cul-De-Sac, Golf Nearby, Not Landscaped, Playground Nearby, Private Setting, Public Swimming Pool, Schools, Shopping Nearby, Treed Lot

**Additional Information**

Date Listed            June 25th, 2025  
Days on Market       21  
Zoning                  Zone 70

DATA IS DEEMED RELIABLE BUT IS NOT GUARANTEED ACCURATE BY THE REALTORS® ASSOCIATION OF EDMONTON. COPYRIGHT 2025 BY THE REALTORS® ASSOCIATION OF EDMONTON. ALL RIGHTS RESERVED.Trademarks are owned or controlled by the Canadian Real Estate Association (CREA) and identify real estate professionals who are members of CREA (REALTOR®, REALTORS®) and/or the quality of services they provide (MLS®, Multiple Listing Service®)  
Listing information last updated on July 16th, 2025 at 5:32pm MDT