

\$339,900 - 10912 155 Street, Edmonton

MLS® #E4444368

\$339,900

3 Bedroom, 2.00 Bathroom, 1,041 sqft
Single Family on 0.00 Acres

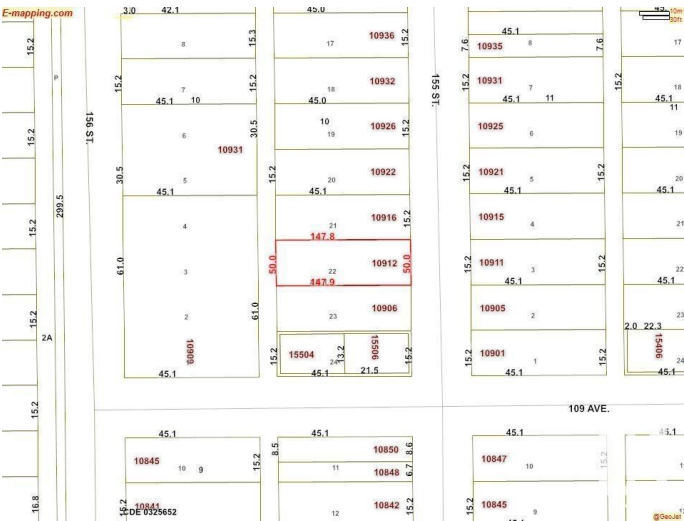
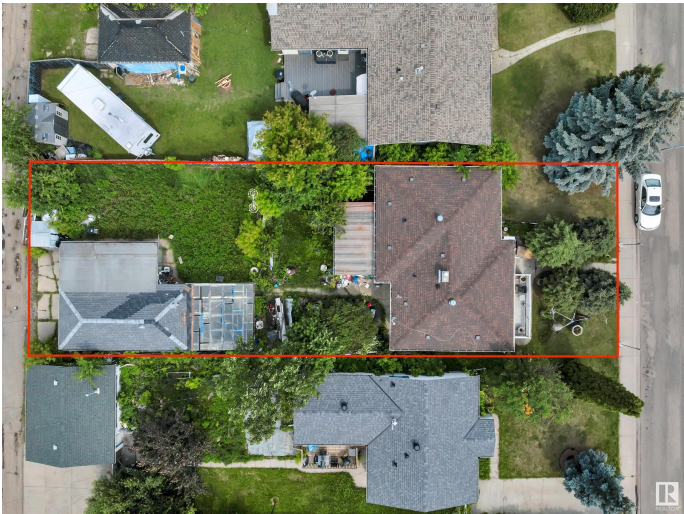
High Park (Edmonton), Edmonton, AB

CALLING ALL DEVELOPERS AND SAVVY INVESTORS! This is your chance to secure a fantastic 50â€™™ x 148â€™™ rectangular lot in the heart of High Park, one of Edmontonâ€™™s evolving infill neighbourhoods. Nestled on a quiet street, this property offers incredible potential for redevelopment. Conveniently located steps from High Park School, with quick access to 156 Street, 111 Avenue, the Yellowhead, Whitemud Drive, and just minutes to downtown. With its generous size and prime location, this lot is a strong long-term investment and ideal for future development. Donâ€™™t miss out on this opportunity to build in a mature, central community with a bright future!

Built in 1958

Essential Information

MLS® #	E4444368
Price	\$339,900
Bedrooms	3
Bathrooms	2.00
Full Baths	2
Square Footage	1,041
Acres	0.00
Year Built	1958
Type	Single Family



Sub-Type	Detached Single Family
Style	Bungalow
Status	Active

Community Information

Address	10912 155 Street
Area	Edmonton
Subdivision	High Park (Edmonton)
City	Edmonton
County	ALBERTA
Province	AB
Postal Code	T5P 2N1

Amenities

Amenities	Infill Property
Parking	Double Garage Detached

Interior

Appliances	Dryer, Freezer, Washer, Refrigerators-Two, Stoves-Two
Heating	Forced Air-1, Natural Gas
Stories	2
Has Basement	Yes
Basement	Full, Finished

Exterior

Exterior	Wood, Brick, Stucco
Exterior Features	Back Lane, Flat Site, Public Transportation, Schools, Shopping Nearby
Roof	Asphalt Shingles
Construction	Wood, Brick, Stucco
Foundation	Concrete Perimeter

Additional Information

Date Listed	June 26th, 2025
Days on Market	37
Zoning	Zone 21

DATA IS DEEMED RELIABLE BUT IS NOT GUARANTEED ACCURATE BY THE REALTORS® ASSOCIATION OF EDMONTON. COPYRIGHT 2025 BY THE REALTORS® ASSOCIATION OF EDMONTON. ALL RIGHTS RESERVED. Trademarks are owned or controlled by the Canadian Real Estate Association (CREA) and identify real estate professionals who are members of CREA (REALTOR®, REALTORS®) and/or the quality of services they provide (MLS®, Multiple Listing Service®)

Listing information last updated on August 2nd, 2025 at 2:47am MDT