

\$1,285,000 - 2 Gibbons Avenue, Rural Parkland County

MLS® #E4444475

\$1,285,000

4 Bedroom, 2.00 Bathroom, 1,808 sqft

Rural on 0.38 Acres

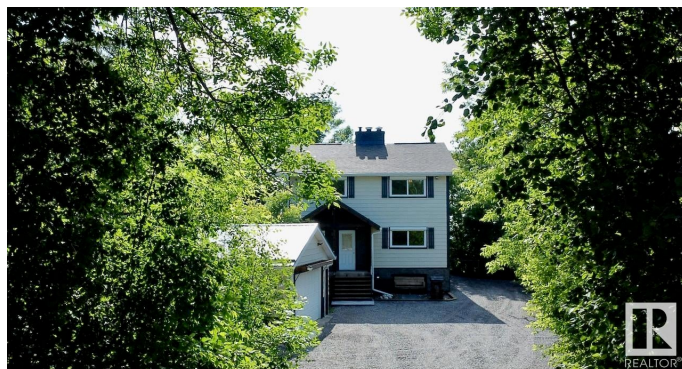
Kapasiwin, Rural Parkland County, AB

Lakefront Living, Sunset Views, and a Home That Has It All! Indulge in the elegance of lakeside living with this exquisite 4 bedroom waterfront estate. Designed across two spacious levels, this home blends sophisticated style with relaxed comfort. Natural light pours in through oversized new windows, highlighting the open concept design and finishes. The gourmet kitchen and formal dining area set the stage for elevated entertaining, while dual living rooms offer refined spaces for both leisure and hosting. Outside, your private boathouse with a rooftop patio offers an exclusive retreat to enjoy panoramic lake views and unforgettable sunsets. With a double garage, wood shed and a beautiful yard, this is more than a home, itâ€™s a legacy property crafted for those who demand the exceptional. Donâ€™t just dream it live it!

Built in 1981

Essential Information

MLS® #	E4444475
Price	\$1,285,000
Bedrooms	4
Bathrooms	2.00
Full Baths	2
Square Footage	1,808



Acres	0.38
Year Built	1981
Type	Rural
Sub-Type	Detached Single Family
Style	2 Storey
Status	Active

Community Information

Address	2 Gibbons Avenue
Area	Rural Parkland County
Subdivision	Kapasiwin
City	Rural Parkland County
County	ALBERTA
Province	AB
Postal Code	T0E 2Y0

Amenities

Features	Closet Organizers, Deck, Fire Pit, No Smoking Home
----------	--

Interior

Heating	Forced Air-1, Natural Gas
Stories	2
Has Basement	Yes
Basement	Full, Unfinished

Exterior

Exterior	Wood
Exterior Features	Beach Access, Boating, Golf Nearby, Lake Access Property, Lake View, Landscaped, Playground Nearby, Private Setting, Recreation Use, Shopping Nearby, Waterfront Property
Construction	Wood
Foundation	Slab

Additional Information

Date Listed	June 26th, 2025
Days on Market	20
Zoning	Zone 93

DATA IS DEEMED RELIABLE BUT IS NOT GUARANTEED ACCURATE BY THE REALTORS® ASSOCIATION OF EDMONTON. COPYRIGHT 2025 BY THE REALTORS® ASSOCIATION OF EDMONTON. ALL RIGHTS RESERVED. Trademarks are owned or controlled by the Canadian Real Estate Association (CREA) and identify real

estate professionals who are members of CREA (REALTOR®®, REALTORS®®) and/or the quality of services they provide (MLS®®, Multiple Listing Service®®)

Listing information last updated on July 16th, 2025 at 5:17pm MDT