

\$194,700 - 18 1503 Mill Woods, Edmonton

MLS® #E4444504

\$194,700

2 Bedroom, 1.00 Bathroom, 947 sqft

Condo / Townhouse on 0.00 Acres

Crawford Plains, Edmonton, AB

Location, Location, Location! Welcome to this breathtaking 2 bedroom end unit located in the highly sought after neighbourhood of Crawford Plains. From the second you walk into this 100% custom renovated condo you will see the elegance and custom finishings throughout. New flooring, baseboards, doors custom exotic tile, surround fireplace, custom white gloss soft close kitchen cabinets, brand new stainless steel appliances, white quartz countertops with black quartz backsplash, mirrors, closet doors, custom lighting, zebra blinds, faucets, hardware. The bathroom has a touch LED mirror, the tub/shower has custom tile surround plus you have ensuite laundry. You also have an extra storage room right outside your front door. This is a must see and it has it all just move in and enjoy pure elegance!

Built in 1980

Essential Information

| | |
|----------------|-----------|
| MLS® # | E4444504 |
| Price | \$194,700 |
| Bedrooms | 2 |
| Bathrooms | 1.00 |
| Full Baths | 1 |
| Square Footage | 947 |
| Acres | 0.00 |



| | |
|------------|-------------------|
| Year Built | 1980 |
| Type | Condo / Townhouse |
| Sub-Type | Carriage |
| Style | Bungalow |
| Status | Active |

Community Information

| | |
|-------------|--------------------|
| Address | 18 1503 Mill Woods |
| Area | Edmonton |
| Subdivision | Crawford Plains |
| City | Edmonton |
| County | ALBERTA |
| Province | AB |
| Postal Code | T6L 4C2 |

Amenities

| | |
|----------------|---|
| Amenities | Deck, Parking-Visitor, Storage-In-Suite |
| Parking Spaces | 1 |
| Parking | Stall |

Interior

| | |
|--------------|--|
| Appliances | Dishwasher-Built-In, Dryer, Microwave Hood Fan, Refrigerator, Stove-Electric, Washer |
| Heating | Forced Air-1, Natural Gas |
| Fireplace | Yes |
| Fireplaces | Tile Surround |
| Stories | 1 |
| Has Basement | Yes |
| Basement | None, No Basement |

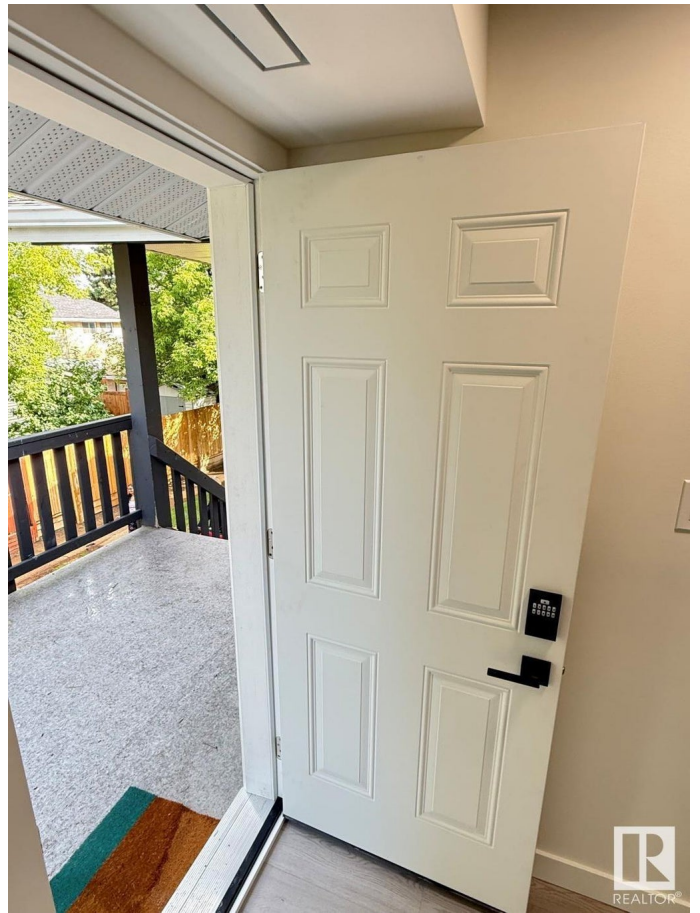
Exterior

| | |
|-------------------|---|
| Exterior | Wood, Vinyl |
| Exterior Features | Landscaped, Public Transportation, Schools, Shopping Nearby |
| Roof | Asphalt Shingles |
| Construction | Wood, Vinyl |
| Foundation | Concrete Perimeter |

Additional Information

| | |
|-------------|-----------------|
| Date Listed | June 26th, 2025 |
|-------------|-----------------|

| | |
|----------------|---------|
| Days on Market | 6 |
| Zoning | Zone 29 |
| Condo Fee | \$255 |



DATA IS DEEMED RELIABLE BUT IS NOT GUARANTEED ACCURATE BY THE REALTORS® ASSOCIATION OF EDMONTON. COPYRIGHT 2025 BY THE REALTORS® ASSOCIATION OF EDMONTON. ALL RIGHTS RESERVED. Trademarks are owned or controlled by the Canadian Real Estate Association (CREA) and identify real estate professionals who are members of CREA (REALTOR®, REALTORS®) and/or the quality of services they provide (MLS®, Multiple Listing Service®)

Listing information last updated on July 2nd, 2025 at 8:18pm MDT