

Courtesy Of Zak B Mimouni Of Exp Realty

\$529,900 - 7281 Morgan Road, Edmonton

MLS® #E4445353

\$529,900

3 Bedroom, 2.50 Bathroom, 1,505 sqft
Single Family on 0.00 Acres

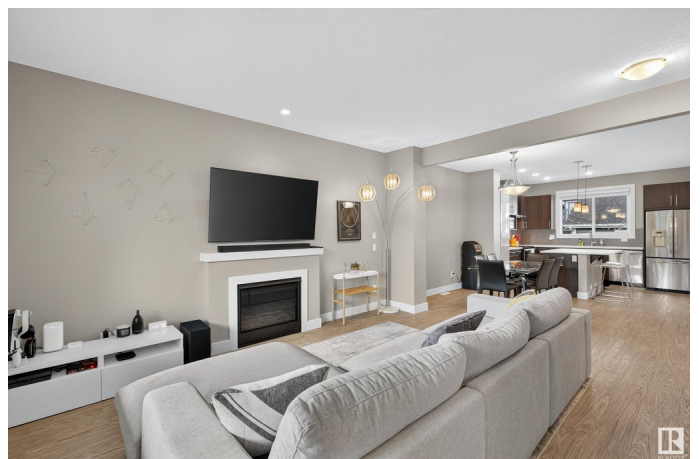
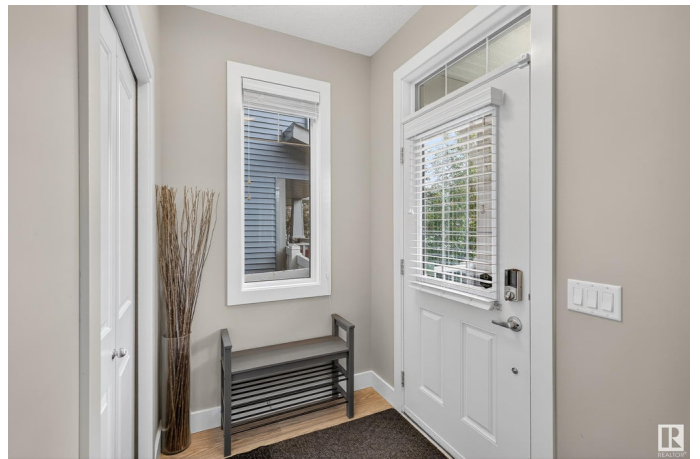
Griesbach, Edmonton, AB

Welcome to this beautifully maintained 2-storey in the sought-after community of Griesbach. From the moment you arrive, youâ€™re greeted by stunning curb appeal and a spacious front veranda that sets the tone. Step into an inviting open-concept layout, ideal for both everyday living & effortless entertaining. The cozy living room features a gas fireplace & large windows flooding the space with natural light. The kitchen boasts stainless steel appliances, quartz countertops, and a center island perfect for casual meals or morning coffee â€“ all flowing into a bright dining area. Upstairs, discover 3 bedrooms, including a primary retreat complete with an organized walk-in closet & private ensuite. Convenience is key with an upper-floor washer & dryer. Enjoy the outdoors with low-maintenance landscaping, a composite back deck for summer gatherings, & a fully insulated & drywalled double detached garage, offering ample storage. This home is also equipped with a A/C, to keep cool during the warm summer days.

Built in 2015

Essential Information

MLS® #	E4445353
Price	\$529,900



Bedrooms	3
Bathrooms	2.50
Full Baths	2
Half Baths	1
Square Footage	1,505
Acres	0.00
Year Built	2015
Type	Single Family
Sub-Type	Detached Single Family
Style	2 Storey
Status	Active

Community Information

Address	7281 Morgan Road
Area	Edmonton
Subdivision	Griesbach
City	Edmonton
County	ALBERTA
Province	AB
Postal Code	T5E 6V7

Amenities

Amenities	See Remarks
Parking	Double Garage Attached

Interior

Interior Features	ensuite bathroom
Appliances	Dishwasher-Built-In, Dryer, Garage Control, Garage Opener, Hood Fan, Refrigerator, Stove-Electric, Washer, Window Coverings
Heating	Forced Air-1, Natural Gas
Stories	2
Has Basement	Yes
Basement	Full, Partially Finished

Exterior

Exterior	Wood, Stone, Vinyl
Exterior Features	See Remarks
Roof	Asphalt Shingles
Construction	Wood, Stone, Vinyl

Foundation Concrete Perimeter

Additional Information

Date Listed July 2nd, 2025

Days on Market 14

Zoning Zone 27

DATA IS DEEMED RELIABLE BUT IS NOT GUARANTEED ACCURATE BY THE REALTORS® ASSOCIATION OF EDMONTON. COPYRIGHT 2025 BY THE REALTORS® ASSOCIATION OF EDMONTON. ALL RIGHTS RESERVED.Trademarks are owned or controlled by the Canadian Real Estate Association (CREA) and identify real estate professionals who are members of CREA (REALTOR®, REALTORS®) and/or the quality of services they provide (MLS®, Multiple Listing Service®)

Listing information last updated on July 16th, 2025 at 8:48am MDT