

## \$0 - 27195 Ellis Road, Rural Parkland County

MLS® #E4446451

**\$0**

0 Bedroom, 0.00 Bathroom,  
Industrial on 0.00 Acres

Acheson Industrial, Rural Parkland County, AB

Location, Location! A rare lease opportunity in the well known Acheson industrial park. This 4,000 SF freestanding warehouse sits on a fully fenced and secure yard, ideal for businesses needing space, quick access to major routes, and high visibility from Highway 16A. 3 OH bay doors, 2 at back 14x14 and 1 on side 12x12. Freestanding buildings with yard space do not come up often in Acheson.

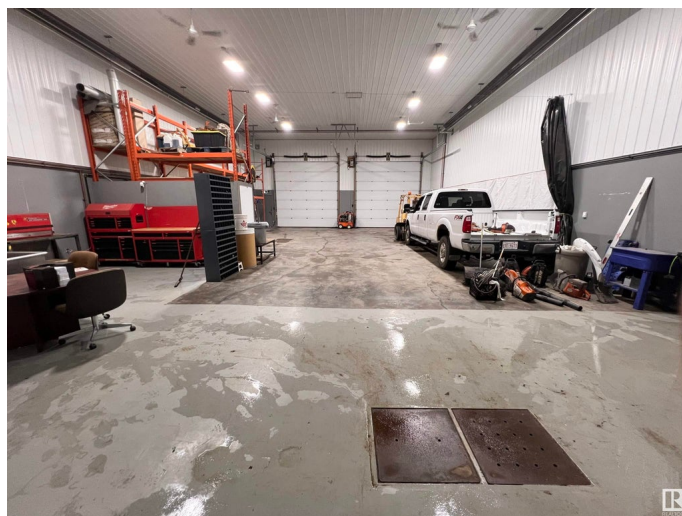
Built in 2019

### Essential Information

MLS® #	E4446451
Bathrooms	0.00
Acres	0.00
Year Built	2019
Type	Industrial
Status	Active

### Community Information

Address	27195 Ellis Road
Area	Rural Parkland County
Subdivision	Acheson Industrial
City	Rural Parkland County
County	ALBERTA
Province	AB
Postal Code	T7X 5A7



**Exterior**

Exterior	Wood Frame, Steel Frame
Construction	Wood Frame, Steel Frame

**Additional Information**

Date Listed	July 7th, 2025
Days on Market	9
Zoning	Zone 70

DATA IS DEEMED RELIABLE BUT IS NOT GUARANTEED ACCURATE BY THE REALTORS® ASSOCIATION OF EDMONTON. COPYRIGHT 2025 BY THE REALTORS® ASSOCIATION OF EDMONTON. ALL RIGHTS RESERVED.Trademarks are owned or controlled by the Canadian Real Estate Association (CREA) and identify real estate professionals who are members of CREA (REALTOR®, REALTORS®) and/or the quality of services they provide (MLS®, Multiple Listing Service®)

Listing information last updated on July 16th, 2025 at 6:17pm MDT