

\$649,000 - 18927 95a Avenue, Edmonton

MLS® #E4446584

\$649,000

6 Bedroom, 3.50 Bathroom, 1,535 sqft

Single Family on 0.00 Acres

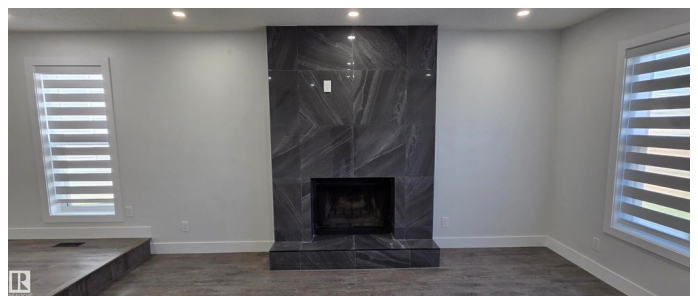
La Perle, Edmonton, AB

2900 Sqft of living space. This home has been fully renovated from top to bottom and is ideal for a large or multi-generational family. Youâ€™ll find SIX roomy bedroomsâ€”three upstairs and three downstairsâ€”and TWO complete kitchens so everyone has their own space. The dual laundry rooms and separate entrance add even more convenience. Step outside to a sunny, south-facing yard and pull right into your double garage. Everythingâ€™s brand new: high-end finishes inside, plus shingles, windows, siding, exterior doors, fencing, and fresh concrete on the driveway, garage floor, and back walkway. Cozy up by the wood-burning fireplace, or switch to the electric fireplace downstairs. Ideal Location with access to main highways and the new west LRT station. This place is a fresh startâ€”move in and make it your own.

Built in 1984

Essential Information

MLS® #	E4446584
Price	\$649,000
Bedrooms	6
Bathrooms	3.50
Full Baths	3
Half Baths	1
Square Footage	1,535



Acres	0.00
Year Built	1984
Type	Single Family
Sub-Type	Detached Single Family
Style	Bungalow
Status	Active

Community Information

Address	18927 95a Avenue
Area	Edmonton
Subdivision	La Perle
City	Edmonton
County	ALBERTA
Province	AB
Postal Code	T5T 5K9

Amenities

Amenities	On Street Parking, Deck, Detectors Smoke, Parking-Extra, Vinyl Windows
Parking Spaces	5
Parking	Double Garage Attached

Interior

Interior Features	ensuite bathroom
Appliances	Dishwasher-Built-In, Dryer, Garage Control, Garage Opener, Microwave Hood Fan, Refrigerator, Window Coverings, Dryer-Two, Refrigerators-Two, Stoves-Two, Washers-Two, Dishwasher-Two
Heating	Forced Air-1, Natural Gas
Fireplace	Yes
Fireplaces	Insert, Tile Surround
Stories	2
Has Basement	Yes
Basement	Full, Finished

Exterior

Exterior	Wood, Brick, Vinyl
Exterior Features	Fenced, Landscaped, No Back Lane, Playground Nearby, Schools, Shopping Nearby
Roof	Asphalt Shingles

Construction	Wood, Brick, Vinyl
Foundation	Concrete Perimeter

Additional Information

Date Listed	July 8th, 2025
Days on Market	60
Zoning	Zone 20

DATA IS DEEMED RELIABLE BUT IS NOT GUARANTEED ACCURATE BY THE REALTORS® ASSOCIATION OF EDMONTON. COPYRIGHT 2025 BY THE REALTORS® ASSOCIATION OF EDMONTON. ALL RIGHTS RESERVED.Trademarks are owned or controlled by the Canadian Real Estate Association (CREA) and identify real estate professionals who are members of CREA (REALTOR®, REALTORS®) and/or the quality of services they provide (MLS®, Multiple Listing Service®)

Listing information last updated on September 6th, 2025 at 1:32am MDT