

\$664,900 - 465 Churchill Crescent, Sherwood Park

MLS® #E4447421

\$664,900

3 Bedroom, 3.00 Bathroom, 1,618 sqft

Single Family on 0.00 Acres

Lakeland Ridge, Sherwood Park, AB

Discover this modern bi-level home perfectly positioned in a peaceful crescent just steps from scenic lake views. Boasting 1617sqft it offers 3 bedrooms and 3 full baths, with every corner upgraded for luxury living. The vaulted main floor features a stunning stained maple hardwood and a chef's dream kitchen. Stunning 36" AGA gas range, multi-tone granite and cabinets, Miele dishwasher, and Bosch refrigerator. The primary suite is secluded, complete with a spacious walk-in closet and an ensuite with a couples shower. Custom touches abound from elegant built-ins in the living room, around the fireplace, walk-out entertainment area, to personalized closet spaces. The lower level is accessed via two staircases at the front and back of the home and a walk-out to a stamped concrete patio, just perfect for entertaining or hot tub. The fully finished, heated garage can fit two trucks. Extras include A/C, large raised deck with gas line, CAT5 wiring throughout, and rough-in for a hot tub.

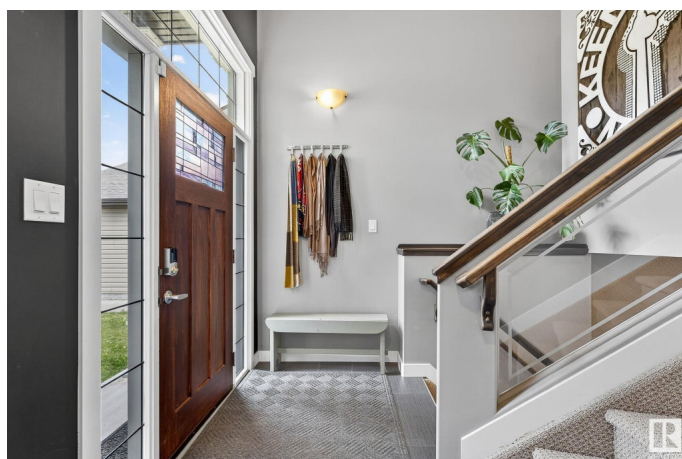
Built in 2012

Essential Information

MLS® # E4447421

Price \$664,900

Bedrooms 3



Bathrooms	3.00
Full Baths	3
Square Footage	1,618
Acres	0.00
Year Built	2012
Type	Single Family
Sub-Type	Detached Single Family
Style	Bi-Level
Status	Active

Community Information

Address	465 Churchill Crescent
Area	Sherwood Park
Subdivision	Lakeland Ridge
City	Sherwood Park
County	ALBERTA
Province	AB
Postal Code	T8T 0R9

Amenities

Amenities	On Street Parking, Air Conditioner, Deck, Detectors Smoke, Hot Water Natural Gas, No Smoking Home, Smart/Program. Thermostat, Storage-In-Suite, Vaulted Ceiling, Vinyl Windows, Walkout Basement
Parking Spaces	4
Parking	Double Garage Attached

Interior

Interior Features	ensuite bathroom
Appliances	Dishwasher-Built-In, Dryer, Hood Fan, Refrigerator, Stove-Gas, Washer
Heating	Forced Air-1, Natural Gas
Fireplace	Yes
Fireplaces	Tile Surround
Stories	3
Has Basement	Yes
Basement	Full, Finished

Exterior

Exterior	Wood, Stone, Vinyl
Exterior Features	Cul-De-Sac, Fenced, Fruit Trees/Shrubs, No Back Lane, No Through

Road, Playground Nearby, Shopping Nearby

Roof	Asphalt Shingles
Construction	Wood, Stone, Vinyl
Foundation	Concrete Perimeter

Additional Information

Date Listed	July 11th, 2025
Days on Market	8
Zoning	Zone 25

DATA IS DEEMED RELIABLE BUT IS NOT GUARANTEED ACCURATE BY THE REALTORS® ASSOCIATION OF EDMONTON. COPYRIGHT 2025 BY THE REALTORS® ASSOCIATION OF EDMONTON. ALL RIGHTS RESERVED.Trademarks are owned or controlled by the Canadian Real Estate Association (CREA) and identify real estate professionals who are members of CREA (REALTOR®, REALTORS®) and/or the quality of services they provide (MLS®, Multiple Listing Service®)

Listing information last updated on July 19th, 2025 at 7:47pm MDT