

\$324,900 - 4312 Lakeshore Rd, Rural Parkland County

MLS® #E4447913

\$324,900

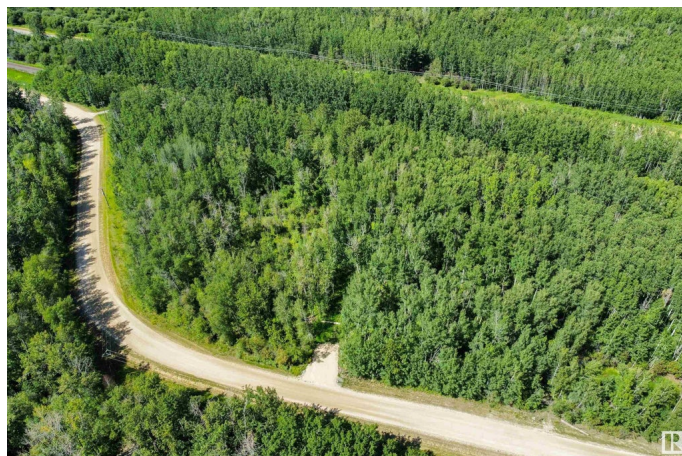
0 Bedroom, 0.00 Bathroom,
Rural on 3.98 Acres

Ascot Beach, Rural Parkland County, AB

This beautiful 4-acre parcel is the perfect opportunity to build your dream home, cottage, or year-round retreat—just blocks from the shores of Wabamun Lake. With services already at the property line, this land is development-ready and offers the space and freedom to create exactly what you’ve been envisioning. Whether you’re looking for peace and quiet or outdoor adventure, this location has it all. Enjoy lake life year-round—boating, fishing, paddleboarding, snowmobiling, or simply unwinding by the water. The northern property line is already secured with a 6' chain-link fence, adding both privacy and peace of mind as you plan your future build. Conveniently located just 45 minutes from Edmonton’s west end, you’ll have easy access to the city while embracing the serenity of country and lake living. This is your chance to make lake life a reality.

Essential Information

MLS® #	E4447913
Price	\$324,900
Bathrooms	0.00
Acres	3.98
Type	Rural
Sub-Type	Vacant Lot/Land



Status Active

Community Information

Address 4312 Lakeshore Rd
Area Rural Parkland County
Subdivision Ascot Beach
City Rural Parkland County
County ALBERTA
Province AB
Postal Code T0E 2K0

Exterior

Exterior Features Backs Onto Park/Trees, Not Fenced, Private Setting, Treed Lot

Additional Information

Date Listed July 15th, 2025
Days on Market 1
Zoning Zone 93

DATA IS DEEMED RELIABLE BUT IS NOT GUARANTEED ACCURATE BY THE REALTORS® ASSOCIATION OF EDMONTON. COPYRIGHT 2025 BY THE REALTORS® ASSOCIATION OF EDMONTON. ALL RIGHTS RESERVED.Trademarks are owned or controlled by the Canadian Real Estate Association (CREA) and identify real estate professionals who are members of CREA (REALTOR®, REALTORS®) and/or the quality of services they provide (MLS®, Multiple Listing Service®)
Listing information last updated on July 16th, 2025 at 5:32pm MDT