

\$349,900 - 5782 Garden Meadows Drive, Wetaskiwin

MLS® #E4451167

\$349,900

4 Bedroom, 2.50 Bathroom, 1,148 sqft

Single Family on 0.00 Acres

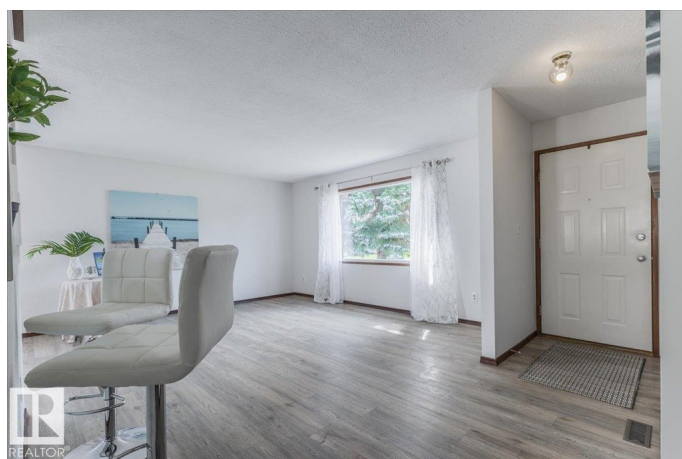
Garden Meadows, Wetaskiwin, AB

Location, Location, Location! situated in Garden Meadows Subdivision, close to schools, parks, rec centre & swimming pool. Large corner lot backing onto a walking path w/ unobstructed views behind. 4 Bedroom Bungalow is sparkling clean & bright w/ vinyl plank flooring through-out the main floor. Kitchen is functional w/ ample cabinetry for storage & 3 appliances included. Formal dining area is lovely w/ patio doors out to your large wrap around deck, perfect for sunrise & sunset views. Central Air- Conditioning is a bonus! 3 bedrooms on the main floor, including the primary room w/ a 2-pc ensuite. Updated, main 4-pc bath. Basement is finished w/ a large family room, bedroom, 3-pc bath, storage & laundry room. Backyard is a great space, fenced w/ dbl detached garage, shed, fire pit & tons of space for RV parking. A Perfect Place to Call Home in a great location. Move-in ready w/ quick possession available!

Built in 1979

Essential Information

MLS® #	E4451167
Price	\$349,900
Bedrooms	4
Bathrooms	2.50
Full Baths	2



Half Baths	1
Square Footage	1,148
Acres	0.00
Year Built	1979
Type	Single Family
Sub-Type	Detached Single Family
Style	Bungalow
Status	Active

Community Information

Address	5782 Garden Meadows Drive
Area	Wetaskiwin
Subdivision	Garden Meadows
City	Wetaskiwin
County	ALBERTA
Province	AB
Postal Code	T9A 2L6

Amenities

Amenities	Air Conditioner, Deck, No Smoking Home, R.V. Storage, Vinyl Windows
Parking	Double Garage Detached, RV Parking

Interior

Interior Features	ensuite bathroom
Appliances	Air Conditioning-Central, Dishwasher-Built-In, Dryer, Freezer, Garage Control, Garage Opener, Hood Fan, Refrigerator, Storage Shed, Stove-Electric, Washer, Window Coverings
Heating	Forced Air-1, Natural Gas
Stories	2
Has Basement	Yes
Basement	Full, Finished

Exterior

Exterior	Wood, Stucco
Exterior Features	Fenced, Golf Nearby, Landscaped, Paved Lane, Public Swimming Pool, Schools, Treed Lot
Roof	Asphalt Shingles
Construction	Wood, Stucco
Foundation	Concrete Perimeter

School Information

Elementary	Norwood
Middle	Sacred Heart
High	WCHS

Additional Information

Date Listed	August 4th, 2025
Days on Market	6
Zoning	Zone 80

DATA IS DEEMED RELIABLE BUT IS NOT GUARANTEED ACCURATE BY THE REALTORS® ASSOCIATION OF EDMONTON. COPYRIGHT 2025 BY THE REALTORS® ASSOCIATION OF EDMONTON. ALL RIGHTS RESERVED.Trademarks are owned or controlled by the Canadian Real Estate Association (CREA) and identify real estate professionals who are members of CREA (REALTOR®, REALTORS®) and/or the quality of services they provide (MLS®, Multiple Listing Service®)

Listing information last updated on August 10th, 2025 at 1:02pm MDT