

\$619,900 - 22035 80 Avenue, Edmonton

MLS® #E4451417

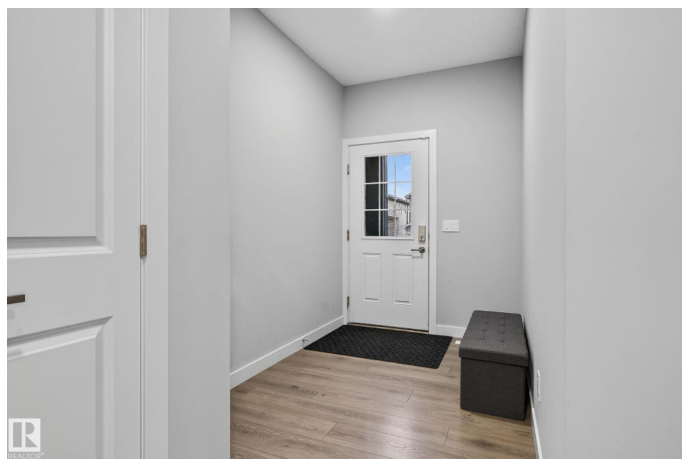
\$619,900

4 Bedroom, 3.50 Bathroom, 1,884 sqft

Single Family on 0.00 Acres

Rosenthal (Edmonton), Edmonton, AB

Welcome to your stylish, like-new home in the vibrant Rosenthal community—one of West Edmonton’s most sought-after neighborhoods! This beautifully designed living space plus an additional fully finished basement suite, there’s room for the entire family and then some. Step inside to discover a bright, open-concept layout featuring soaring 9’ ceilings on the main floor and a stunning open-to-below design that adds architectural flair. The spacious foyer leads into a chef-inspired kitchen complete with sleek cabinetry, quartz countertops, and ample space to create culinary masterpieces. The living room is filled with natural light thanks to oversized windows that offer serene views of the backyard. Upstairs, unwind in the generous bonus room or retreat to one of three spacious bedrooms, including a luxurious primary suite with a walk-in closet and a spa-like ensuite. This home is the perfect blend of modern design, functionality, and flexibility.



Built in 2021

Essential Information

MLS® #	E4451417
Price	\$619,900
Bedrooms	4
Bathrooms	3.50

Full Baths	3
Half Baths	1
Square Footage	1,884
Acres	0.00
Year Built	2021
Type	Single Family
Sub-Type	Detached Single Family
Style	2 Storey
Status	Active

Community Information

Address	22035 80 Avenue
Area	Edmonton
Subdivision	Rosenthal (Edmonton)
City	Edmonton
County	ALBERTA
Province	AB
Postal Code	T5T 7R6

Amenities

Amenities	Deck, Detectors Smoke
Parking	Double Garage Attached

Interior

Interior Features	ensuite bathroom
Appliances	Dishwasher-Built-In, Dryer, Washer, Refrigerators-Two, Stoves-Two
Heating	Forced Air-1, Natural Gas
Stories	3
Has Basement	Yes
Basement	Full, Finished

Exterior

Exterior	Wood, Vinyl
Exterior Features	Fenced, Golf Nearby, Playground Nearby, Public Transportation, Schools, Shopping Nearby
Roof	Asphalt Shingles
Construction	Wood, Vinyl
Foundation	Concrete Perimeter

Additional Information

Date Listed August 6th, 2025

Days on Market 1

Zoning Zone 58

DATA IS DEEMED RELIABLE BUT IS NOT GUARANTEED ACCURATE BY THE REALTORS® ASSOCIATION OF EDMONTON. COPYRIGHT 2025 BY THE REALTORS® ASSOCIATION OF EDMONTON. ALL RIGHTS RESERVED. Trademarks are owned or controlled by the Canadian Real Estate Association (CREA) and identify real estate professionals who are members of CREA (REALTOR®, REALTORS®) and/or the quality of services they provide (MLS®, Multiple Listing Service®)

Listing information last updated on August 7th, 2025 at 1:33pm MDT