

\$494,700 - 3281 Cherry Crescent, Edmonton

MLS® #E4452078

\$494,700

3 Bedroom, 2.50 Bathroom, 1,615 sqft
Single Family on 0.00 Acres

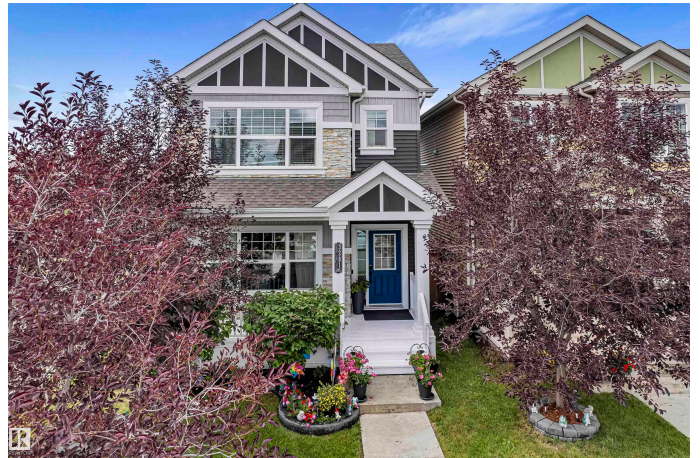
The Orchards At Ellerslie, Edmonton, AB

Discover your dream home in the heart of Orchards on a desirable corner lot. This stunning single-family residence is perfectly situated near schools, parks & shopping centre. The main floor boasts a spacious living area, dining area, powder room, open-concept kitchen with EXTENDED ISLAND, WET BAR. Upstairs, you'll find 2 BEDROOMS, a shared 3PC WASHROOM, and a LUXURIOUS MASTER BEDROOM with a 4PC ENSUITE. Laundry is conveniently situated upstairs for easy access. Backyard oasis features a fully landscaped yard, stylish fencing, and a beautiful deck with sleek glass railing, creating the perfect blend of form and function for relaxation and entertainment. The house has CENTRAL AIR CONDITIONING throughout.

Built in 2017

Essential Information

| | |
|----------------|-----------|
| MLS® # | E4452078 |
| Price | \$494,700 |
| Bedrooms | 3 |
| Bathrooms | 2.50 |
| Full Baths | 2 |
| Half Baths | 1 |
| Square Footage | 1,615 |
| Acres | 0.00 |



| | |
|------------|------------------------|
| Year Built | 2017 |
| Type | Single Family |
| Sub-Type | Detached Single Family |
| Style | 2 Storey |
| Status | Active |

Community Information

| | |
|-------------|---------------------------|
| Address | 3281 Cherry Crescent |
| Area | Edmonton |
| Subdivision | The Orchards At Ellerslie |
| City | Edmonton |
| County | ALBERTA |
| Province | AB |
| Postal Code | T6X 1Y5 |

Amenities

| | |
|-----------|------------------------|
| Amenities | See Remarks |
| Parking | Double Garage Detached |

Interior

| | |
|-------------------|---|
| Interior Features | ensuite bathroom |
| Appliances | Air Conditioning-Central, Dishwasher-Built-In, Dryer, Refrigerator-Energy Star, Stove-Gas, Washer, Wine/Beverage Cooler |
| Heating | Forced Air-1, Natural Gas |
| Stories | 2 |
| Has Basement | Yes |
| Basement | Full, Unfinished |

Exterior

| | |
|-------------------|--------------------|
| Exterior | Wood, Vinyl |
| Exterior Features | See Remarks |
| Roof | Asphalt Shingles |
| Construction | Wood, Vinyl |
| Foundation | Concrete Perimeter |

Additional Information

| | |
|----------------|------------------|
| Date Listed | August 8th, 2025 |
| Days on Market | 8 |
| Zoning | Zone 53 |

HOA Fees 450

HOA Fees Freq. Annually

DATA IS DEEMED RELIABLE BUT IS NOT GUARANTEED ACCURATE BY THE REALTORS® ASSOCIATION OF EDMONTON. COPYRIGHT 2025 BY THE REALTORS® ASSOCIATION OF EDMONTON. ALL RIGHTS RESERVED. Trademarks are owned or controlled by the Canadian Real Estate Association (CREA) and identify real estate professionals who are members of CREA (REALTOR®, REALTORS®) and/or the quality of services they provide (MLS®, Multiple Listing Service®)

Listing information last updated on August 16th, 2025 at 12:47am MDT