

Courtesy Of Carlyn Dreichel Of RE/MAX Discover

\$329,000 - 5213 38 Avenue, Wetaskiwin

MLS® #E4452470

\$329,000

4 Bedroom, 2.50 Bathroom, 1,516 sqft

Single Family on 0.00 Acres

Lynalta, Wetaskiwin, AB

Welcome to this unique 2-story home with a spacious lot and a large backyard with an extensive deck perfect for family gatherings. The basement includes an additional bedroom with new drywall and new flooring (2025) and interior paint on main floor (2024). Upgrades over the past 5 years include new shingles, flooring, a renovated kitchen with stainless steel appliances, and an added bathroom in the basement, plus an improved driveway. The main floor has a convenient half bath connected to a full laundry room with a handy chute from the upper levels. Upstairs has 3 bedrooms and a 4-piece bathroom with a jetted tub for unwinding after a long day. Plus, a primary bedroom with a walk-in closet. The backyard is an oasis, filled with a vibrant garden that yields an array of delicious berries and 33 red raspberry plants. Also, enjoy the fruits of your labour with lovely plum, pear, and cherry trees! This property is a true hidden gem and an absolute must-see! Don't miss your chance to make it your dream home!

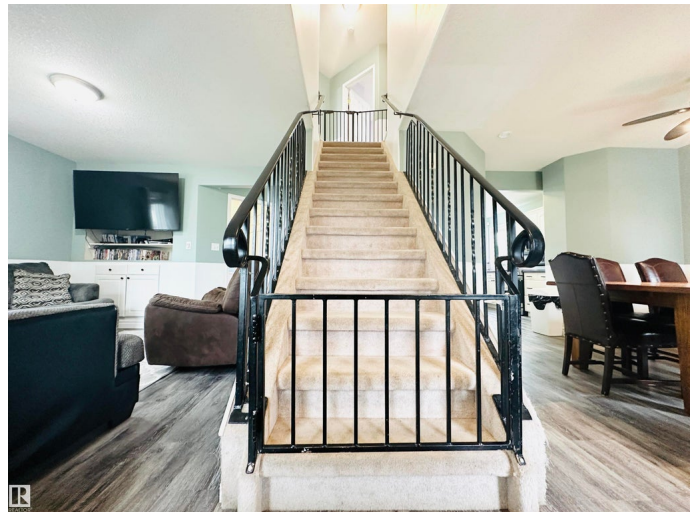
Built in 2001

Essential Information

MLS® # E4452470

Price \$329,000

Bedrooms 4



Bathrooms	2.50
Full Baths	2
Half Baths	1
Square Footage	1,516
Acres	0.00
Year Built	2001
Type	Single Family
Sub-Type	Detached Single Family
Style	2 Storey
Status	Active

Community Information

Address	5213 38 Avenue
Area	Wetaskiwin
Subdivision	Lynalta
City	Wetaskiwin
County	ALBERTA
Province	AB
Postal Code	T9A 2N9

Amenities

Amenities	Off Street Parking, On Street Parking, Deck, Front Porch
Parking	Front Drive Access

Interior

Interior Features	ensuite bathroom
Appliances	Dishwasher-Built-In, Dryer, Microwave Hood Fan, Refrigerator, Storage Shed, Stove-Electric, Washer
Heating	Forced Air-1, Natural Gas
Stories	3
Has Basement	Yes
Basement	Full, Finished

Exterior

Exterior	Wood, Vinyl
Exterior Features	Fenced, Landscaped, Playground Nearby, Schools, Shopping Nearby
Roof	Asphalt Shingles
Construction	Wood, Vinyl
Foundation	Concrete Perimeter

School Information

Elementary	Parkdale School
High	Wetaskiwin Composite

Additional Information

Date Listed	August 11th, 2025
Days on Market	3
Zoning	Zone 80

DATA IS DEEMED RELIABLE BUT IS NOT GUARANTEED ACCURATE BY THE REALTORS® ASSOCIATION OF EDMONTON. COPYRIGHT 2025 BY THE REALTORS® ASSOCIATION OF EDMONTON. ALL RIGHTS RESERVED.Trademarks are owned or controlled by the Canadian Real Estate Association (CREA) and identify real estate professionals who are members of CREA (REALTOR®, REALTORS®) and/or the quality of services they provide (MLS®, Multiple Listing Service®)

Listing information last updated on August 14th, 2025 at 1:47am MDT