

\$210,000 - 10254 148 Street, Edmonton

MLS® #E4452541

\$210,000

4 Bedroom, 2.00 Bathroom, 921 sqft

Condo / Townhouse on 0.00 Acres

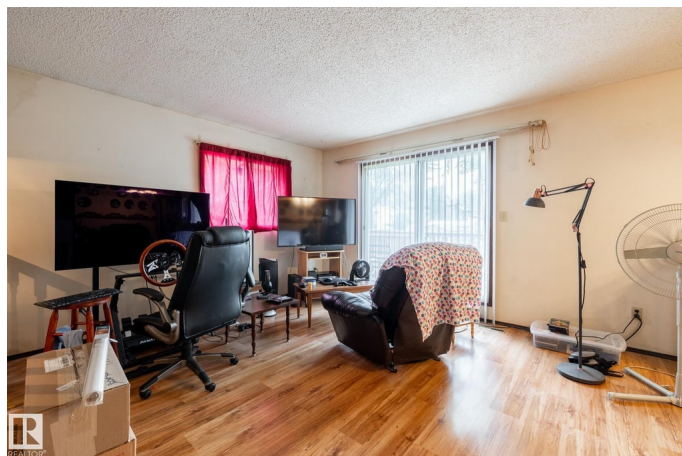
Grovenor, Edmonton, AB

A TOWNHOUSE IN THE DESIREABLE NEIGHBORHOOD OF GROVENOR. A great family home with 1775 sq ft of living area in a mature neighborhood with tree lined streets. This is a unique townhouse - a 4-plex that is now a townhouse complex registered under a condo plan. This 921 sq ft bi-level has 4 bedrooms & the primary bedroom has a 2 piece ensuite. There is a full bath and another 2 piece. The fully finished lower level gives you options with two bedrooms and a huge rec room. You are a block away from the LRT; close to shopping; schools; medical/dental offices. Put your decorating skills to work and make this YOUR family home.

Built in 1975

Essential Information

MLS® #	E4452541
Price	\$210,000
Bedrooms	4
Bathrooms	2.00
Full Baths	1
Half Baths	2
Square Footage	921
Acres	0.00
Year Built	1975
Type	Condo / Townhouse



Sub-Type	Townhouse
Style	Bi-Level
Status	Active

Community Information

Address	10254 148 Street
Area	Edmonton
Subdivision	Grovenor
City	Edmonton
County	ALBERTA
Province	AB
Postal Code	T5N 3G4

Amenities

Amenities	Deck
Parking Spaces	1
Parking	Stall

Interior

Interior Features	ensuite bathroom
Appliances	Dryer, Freezer, Refrigerator, Stove-Electric, Washer
Heating	Forced Air-1, Natural Gas
Stories	2
Has Basement	Yes
Basement	Full, Finished

Exterior

Exterior	Wood, Metal
Exterior Features	Back Lane, Landscaped, Playground Nearby, Public Transportation, Schools, Shopping Nearby, Partially Fenced
Roof	Asphalt Shingles
Construction	Wood, Metal
Foundation	Concrete Perimeter

Additional Information

Date Listed	August 11th, 2025
Days on Market	3
Zoning	Zone 21
Condo Fee	\$250

DATA IS DEEMED RELIABLE BUT IS NOT GUARANTEED ACCURATE BY THE REALTORS® ASSOCIATION OF EDMONTON. COPYRIGHT 2025 BY THE REALTORS® ASSOCIATION OF EDMONTON. ALL RIGHTS RESERVED.Trademarks are owned or controlled by the Canadian Real Estate Association (CREA) and identify real estate professionals who are members of CREA (REALTOR®, REALTORS®) and/or the quality of services they provide (MLS®, Multiple Listing Service®)

Listing information last updated on August 14th, 2025 at 3:47am MDT