

\$679,900 - 38 56220 Rge Road 230, Rural Sturgeon County

MLS® #E4459957

\$679,900

5 Bedroom, 3.00 Bathroom, 1,402 sqft

Rural on 3.90 Acres

Sturgeon Valley Estate, Rural Sturgeon County, AB

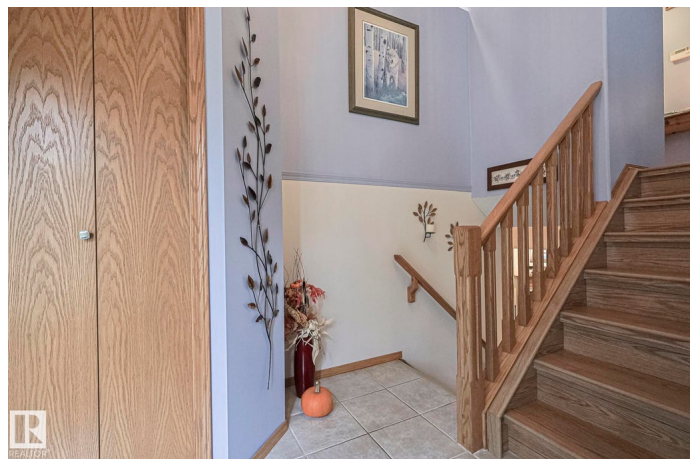
Beautifully maintained & upgraded 1400 sqft + finished basement bi level style home with bonus floor area, featuring 3+2 bedrooms & 3 bathrooms, located on 3.90 beautifully landscaped acres in Sturgeon Valley Estates. Main floor features a large living room, dining room piano window & patio doors with access to sun deck & renovated kitchen with granite counter tops, moveable island, pantry & stainless steel appliances. Primary bedroom features barn doors, walk in closet & 3 piece ensuite. Bedrooms 2 & 3 & the upgraded main bathroom are located on bonus/upper level. Fully finished basement features a family room with gas fireplace, bedrooms 4 & 5, upgraded bathroom & large laundry room. Oversized heated garage is 26'x22'. Outdoors you'll find a multi level deck (dura decking), new hot tub (2023), 2 sheds, play structure, fenced horse pen with lean to, firepit, above ground pool, RV parking, plenty of trees & perennials. Commune with nature in this peaceful and private country residence!

Built in 1997

Essential Information

MLS® #

E4459957



Price	\$679,900
Bedrooms	5
Bathrooms	3.00
Full Baths	3
Square Footage	1,402
Acres	3.90
Year Built	1997
Type	Rural
Sub-Type	Detached Single Family
Style	Bi-Level
Status	Active

Community Information

Address	38 56220 Rge Road 230
Area	Rural Sturgeon County
Subdivision	Sturgeon Valley Estate
City	Rural Sturgeon County
County	ALBERTA
Province	AB
Postal Code	T0A 1N0

Amenities

Features	Deck, Detectors Smoke, Hot Tub, No Smoking Home, Pool-Outdoor, R.V. Storage, See Remarks
Parking Spaces	8

Interior

Interior Features	ensuite bathroom
Heating	Forced Air-1, Natural Gas
Fireplace	Yes
Stories	3
Has Basement	Yes
Basement	Full, Finished

Exterior

Exterior	Wood
Exterior Features	Fenced, Landscaped, Level Land, Private Setting, Treed Lot, See Remarks
Construction	Wood

Foundation Concrete Perimeter

Additional Information

Date Listed September 29th, 2025

Days on Market 1

Zoning Zone 60

DATA IS DEEMED RELIABLE BUT IS NOT GUARANTEED ACCURATE BY THE REALTORS® ASSOCIATION OF EDMONTON. COPYRIGHT 2025 BY THE REALTORS® ASSOCIATION OF EDMONTON. ALL RIGHTS RESERVED.Trademarks are owned or controlled by the Canadian Real Estate Association (CREA) and identify real estate professionals who are members of CREA (REALTOR®, REALTORS®) and/or the quality of services they provide (MLS®, Multiple Listing Service®)

Listing information last updated on September 30th, 2025 at 7:32pm MDT