

\$469,000 - 13 25515 Twp Road 511 A, Rural Parkland County

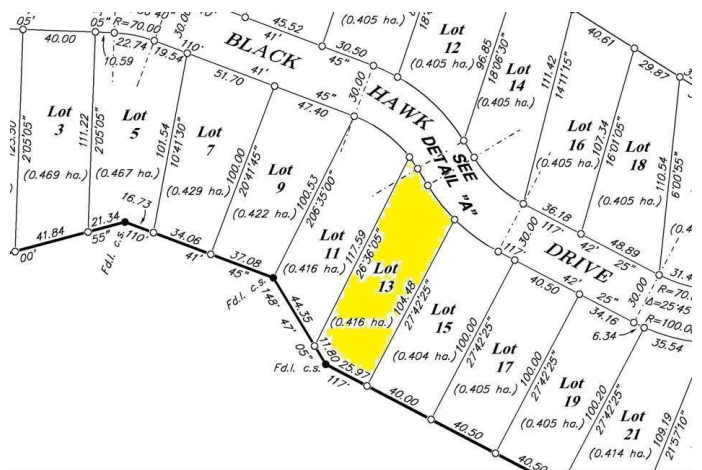
MLS® #E4460086

\$469,000

0 Bedroom, 0.00 Bathroom,
Rural on 1.03 Acres

The Estates at Blackhawk, Rural Parkland County, AB

Backing onto the river valley this one acre parcel is ready for your new County Home in the Estates at Blackhawk. Very nice quality homes already established in this well maintained community of Blackhawk. This parcel would be suitable for a walkout style home with a backyard view of the river valley. It will be just a short walk to the soon to be open 88 acre Edmonton Area Land Trust property with walking trails on the river valleys edge. From Blackhawk it is a short 15 minute drive to the amenities of south west Edmonton. Also only a 20 minute drive to the Leduc/Nisku International Airport area.



Essential Information

MLS® #	E4460086
Price	\$469,000
Bathrooms	0.00
Acres	1.03
Type	Rural
Sub-Type	Vacant Lot/Land
Status	Active

Community Information

Address 13 25515 Twp Road 511 A



Area	Rural Parkland County
Subdivision	The Estates at Blackhawk
City	Rural Parkland County
County	ALBERTA
Province	AB
Postal Code	T7Y 1A8

Exterior

Exterior Features Golf Nearby, Rolling Land, Sloping Lot

Additional Information

Date Listed	September 30th, 2025
Days on Market	1
Zoning	Zone 90

DATA IS DEEMED RELIABLE BUT IS NOT GUARANTEED ACCURATE BY THE REALTORS® ASSOCIATION OF EDMONTON. COPYRIGHT 2025 BY THE REALTORS® ASSOCIATION OF EDMONTON. ALL RIGHTS RESERVED. Trademarks are owned or controlled by the Canadian Real Estate Association (CREA) and identify real estate professionals who are members of CREA (REALTOR®, REALTORS®) and/or the quality of services they provide (MLS®, Multiple Listing Service®)

Listing information last updated on October 1st, 2025 at 1:17am MDT