

\$525,000 - 26 Longview Place, Spruce Grove

MLS® #E4460087

\$525,000

2 Bedroom, 3.00 Bathroom, 1,222 sqft

Single Family on 0.00 Acres

Linkside, Spruce Grove, AB

Location, Location, Location!!! This gorgeous 1222 sq ft bungalow is located on The Links Golf Course just before the 18th tee box. This home is very open and bright. The large country kitchen with white cabinets, tons of counter space, a kitchen island and pantry anchors the living room and dining room. Gleaming ceramic tile floors except in the bedrooms and basement where there is carpet. The living room has a gas f/p with an oak mantle and numerous windows that floods the space with natural light. The dining room has recessed niche for your china cabinet. The primary bedroom has a 3 piece ensuite and double closets. A garden door leads into the main floor den. The basement is fully finished with a family room including a f/p and pool table, another bedroom with 3 piece cheater bath, laundry and a workshop area. Shows like new and very well maintained. This is an adult complex (35+). HOA of \$1800/year includes lawn/snow maintenance and shingle contribution. Some photos virtually staged.

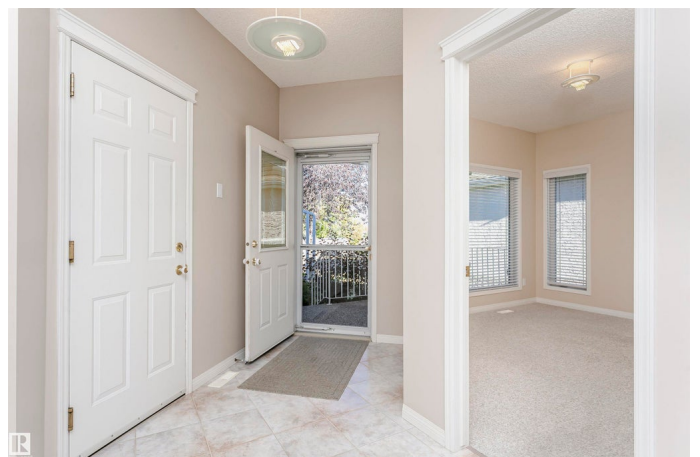
Built in 1997

Essential Information

MLS® # E4460087

Price \$525,000

Bedrooms 2



Bathrooms	3.00
Full Baths	3
Square Footage	1,222
Acres	0.00
Year Built	1997
Type	Single Family
Sub-Type	Half Duplex
Style	Bungalow
Status	Active

Community Information

Address	26 Longview Place
Area	Spruce Grove
Subdivision	Linkside
City	Spruce Grove
County	ALBERTA
Province	AB
Postal Code	T7X 3Y6

Amenities

Amenities	Air Conditioner, Deck, No Animal Home, No Smoking Home
Parking	Double Garage Attached, Insulated

Interior

Interior Features	ensuite bathroom
Appliances	Air Conditioning-Central, Dishwasher-Built-In, Dryer, Garage Control, Garage Opener, Hood Fan, Oven-Microwave, Refrigerator, Stove-Electric, Washer, Window Coverings
Heating	Forced Air-1, Natural Gas
Fireplace	Yes
Fireplaces	Mantel
Stories	2
Has Basement	Yes
Basement	Full, Finished

Exterior

Exterior	Wood, Stone, Stucco
Exterior Features	Backs Onto Park/Trees, Golf Nearby, Low Maintenance Landscape, Private Setting

Roof	Asphalt Shingles
Construction	Wood, Stone, Stucco
Foundation	Concrete Perimeter

Additional Information

Date Listed	September 30th, 2025
Days on Market	1
Zoning	Zone 91
HOA Fees	1800
HOA Fees Freq.	Annually

DATA IS DEEMED RELIABLE BUT IS NOT GUARANTEED ACCURATE BY THE REALTORS® ASSOCIATION OF EDMONTON. COPYRIGHT 2025 BY THE REALTORS® ASSOCIATION OF EDMONTON. ALL RIGHTS RESERVED.Trademarks are owned or controlled by the Canadian Real Estate Association (CREA) and identify real estate professionals who are members of CREA (REALTOR®, REALTORS®) and/or the quality of services they provide (MLS®, Multiple Listing Service®)

Listing information last updated on October 1st, 2025 at 6:47am MDT