

Courtesy Of Susan G Young Of Real Broker

\$434,900 - 25 Grant Avenue, Sherwood Park

MLS® #E4460160

\$434,900

6 Bedroom, 1.50 Bathroom, 1,193 sqft

Single Family on 0.00 Acres

Glen Allan, Sherwood Park, AB

This renovated Glen Allan home sits on a large corner lot surrounded by mature trees and offers 6 bedrooms and 1.1 bathrooms, making it ideal for a growing family or those needing extra space. The exterior features updated triple-pane windows that enhance curb appeal while improving energy efficiency and comfort. Inside, the layout provides a spacious living room filled with natural light, a modernized kitchen with updated cabinetry and counters, and a dining area perfect for gatherings. The main level has three bedrooms with convenient access to the refreshed full bathroom, additional 3 bedrooms and a versatile rec room can be found in the basement. A stylish half bath is the ensuite off the primary bedroom. Recent renovations include upgraded finishes, updated fixtures, and hardwood flooring. Outside, the expansive yard offers plenty of room for entertaining, play or gardening, with the added benefit of corner-lot privacy and ample parking space. Steps away from shopping and schools.

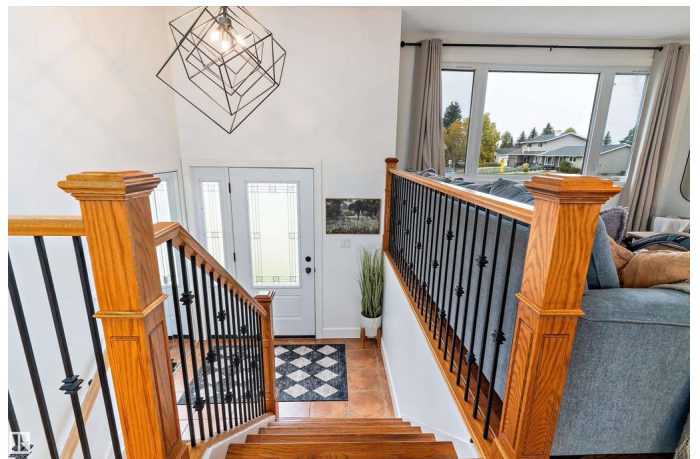
Built in 1972

Essential Information

MLS® # E4460160

Price \$434,900

Bedrooms 6



Bathrooms	1.50
Full Baths	1
Half Baths	1
Square Footage	1,193
Acres	0.00
Year Built	1972
Type	Single Family
Sub-Type	Detached Single Family
Style	Bi-Level
Status	Active

Community Information

Address	25 Grant Avenue
Area	Sherwood Park
Subdivision	Glen Allan
City	Sherwood Park
County	ALBERTA
Province	AB
Postal Code	T8A 3B7

Amenities

Amenities	Off Street Parking, Detectors Smoke, Fire Pit, No Smoking Home, Patio
Parking	2 Outdoor Stalls

Interior

Interior Features	ensuite bathroom
Appliances	Dishwasher-Built-In, Dryer, Hood Fan, Refrigerator, Storage Shed, Stove-Electric, Vacuum System Attachments, Washer, Window Coverings
Heating	Forced Air-1, Natural Gas
Stories	2
Has Basement	Yes
Basement	Full, Finished

Exterior

Exterior	Wood, Brick, Stucco, Vinyl
Exterior Features	Airport Nearby, Corner Lot, Fenced, Golf Nearby, Landscaped, Playground Nearby, Public Swimming Pool, Public Transportation, Schools, Shopping Nearby

Roof	Asphalt Shingles
Construction	Wood, Brick, Stucco, Vinyl
Foundation	Concrete Perimeter

Additional Information

Date Listed	October 1st, 2025
Days on Market	2
Zoning	Zone 25

DATA IS DEEMED RELIABLE BUT IS NOT GUARANTEED ACCURATE BY THE REALTORS® ASSOCIATION OF EDMONTON. COPYRIGHT 2025 BY THE REALTORS® ASSOCIATION OF EDMONTON. ALL RIGHTS RESERVED.Trademarks are owned or controlled by the Canadian Real Estate Association (CREA) and identify real estate professionals who are members of CREA (REALTOR®, REALTORS®) and/or the quality of services they provide (MLS®, Multiple Listing Service®)

Listing information last updated on October 2nd, 2025 at 11:32pm MDT