

# \$164,900 - 318 5005 31 Avenue, Edmonton

MLS® #E4460407

**\$164,900**

2 Bedroom, 2.00 Bathroom, 778 sqft

Condo / Townhouse on 0.00 Acres

Tawa, Edmonton, AB

Discover top-floor living in this bright and airy 2-bedroom, 2-bath condo, lovingly maintained by its original owner. Bathed in natural light with a sunny west-facing exposure, this home welcomes you with warm neutral tones, upgraded laminate flooring, and sleek ceramic tile. The galley-style kitchen is both stylish and functional, featuring stainless steel appliances that complement the open dining and living area. Step onto the large private balcony to enjoy evening sunsets or morning coffee in peace. Both bedrooms are generously sized, with the primary offering a full ensuite and walkthrough closet for added convenience. Low condo fees—including heat and water—make ownership easy, while the unbeatable location puts you within walking distance to Grey Nuns Hospital, Mill Woods Rec Centre, the Transit Centre, and nearby parks. A rare top-floor gem with modern touches and everyday practicality—this is the condo you’ve been waiting for! Some images are virtually staged.

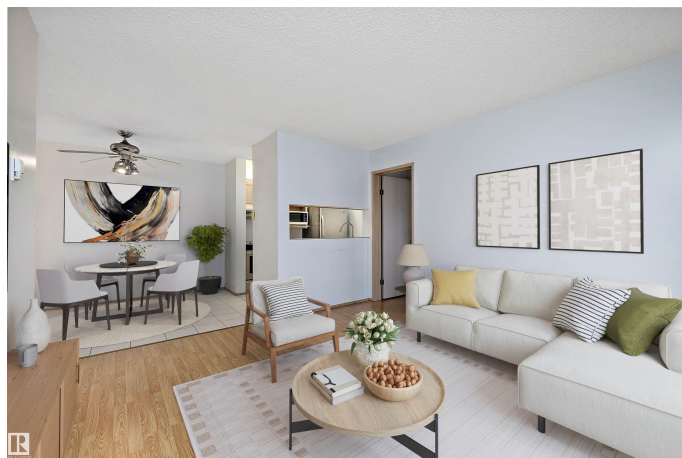
Built in 1992

## Essential Information

MLS® # E4460407

Price \$164,900

Bedrooms 2



Bathrooms	2.00
Full Baths	2
Square Footage	778
Acres	0.00
Year Built	1992
Type	Condo / Townhouse
Sub-Type	Lowrise Apartment
Style	Single Level Apartment
Status	Active

### **Community Information**

Address	318 5005 31 Avenue
Area	Edmonton
Subdivision	Tawa
City	Edmonton
County	ALBERTA
Province	AB
Postal Code	T6L 6S6

### **Amenities**

Amenities	No Animal Home, No Smoking Home, Parking-Visitor, Patio
Parking Spaces	1
Parking	Stall

### **Interior**

Interior Features	ensuite bathroom
Appliances	Dishwasher-Built-In, Refrigerator, Stacked Washer/Dryer, Stove-Electric
Heating	Baseboard, Natural Gas
# of Stories	3
Stories	1
Has Basement	Yes
Basement	None, No Basement

### **Exterior**

Exterior	Wood, Vinyl
Exterior Features	Golf Nearby, Park/Reserve, Playground Nearby, Schools, Shopping Nearby
Roof	Asphalt Shingles
Construction	Wood, Vinyl

Foundation	Concrete Perimeter
------------	--------------------

### School Information

Elementary	Weinlos School
Middle	Kate Chegwin School
High	W.P. Wagner School

### Additional Information

Date Listed	October 2nd, 2025
Zoning	Zone 29
Condo Fee	\$361

DATA IS DEEMED RELIABLE BUT IS NOT GUARANTEED ACCURATE BY THE REALTORS® ASSOCIATION OF EDMONTON. COPYRIGHT 2025 BY THE REALTORS® ASSOCIATION OF EDMONTON. ALL RIGHTS RESERVED. Trademarks are owned or controlled by the Canadian Real Estate Association (CREA) and identify real estate professionals who are members of CREA (REALTOR®, REALTORS®) and/or the quality of services they provide (MLS®, Multiple Listing Service®)

Listing information last updated on October 2nd, 2025 at 6:47pm MDT