

# **\$595,800 - 7303 90 Avenue, Edmonton**

MLS® #E4460549

**\$595,800**

5 Bedroom, 3.00 Bathroom, 1,060 sqft  
Single Family on 0.00 Acres

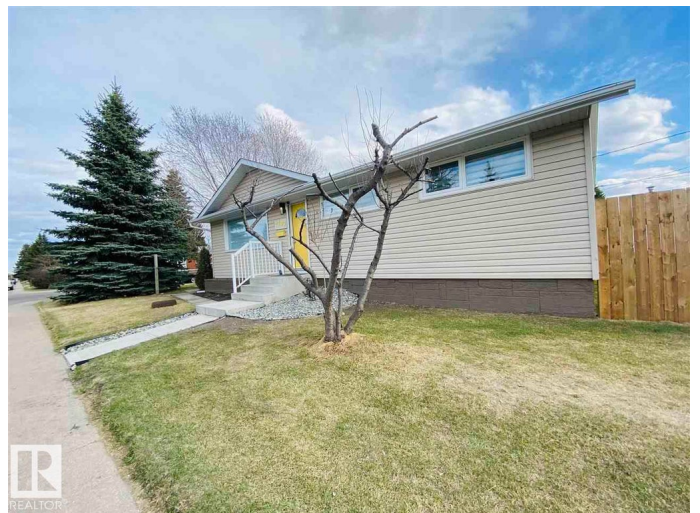
Kenilworth, Edmonton, AB

Walk in to this Bungalow and you be stunned!... EVERYTHING NEW â€“ Windows at Both Levels, Blinds, paint, new flooring, cabinets, Quartz countertops. Plumbing from bottom up Brand new shingles, Furnace, On Demand water heating with Bonus Hot Tub on the deck. Three newly innovated Washrooms, Total 5 Bedrooms - 3 upstairs and open space that you will love at first sight. Enjoy wall mounted fireplace, dining kitchen bracing each other with new two tone Kitchen cabinetry along with classic waterfall Island. Savings for future with foam spray insulation in the basement corners, new under concrete plumbing. Huge Game room to enjoy facing the BAR. Deck with private screen is just a top up. At arms length are Kenilworth Park, Kenilworth Community League, & outdoor skating. Arena indoor skating, Waverly School, Kenilworth School, Ecole Sainte-Jeanne-d'Arc, Playgrounds, toboggan hill. I can only say so much, must come and see the work done!

Built in 1960

## **Essential Information**

MLS® #	E4460549
Price	\$595,800
Bedrooms	5
Bathrooms	3.00



Full Baths	3
Square Footage	1,060
Acres	0.00
Year Built	1960
Type	Single Family
Sub-Type	Detached Single Family
Style	Bungalow
Status	Active

### **Community Information**

Address	7303 90 Avenue
Area	Edmonton
Subdivision	Kenilworth
City	Edmonton
County	ALBERTA
Province	AB
Postal Code	T6B 0P6

### **Amenities**

Amenities	Deck, Hot Tub, Hot Water Tankless, Parking-Extra, Patio
Parking	Double Garage Detached

### **Interior**

Appliances	Dishwasher-Built-In, Garage Opener, Microwave Hood Fan, Refrigerator, Stacked Washer/Dryer, Stove-Electric, TV Wall Mount, Curtains and Blinds, Hot Tub
Heating	Forced Air-1, Natural Gas
Fireplace	Yes
Fireplaces	Wall Mount
Stories	2
Has Basement	Yes
Basement	Full, Finished

### **Exterior**

Exterior	Wood, Vinyl
Exterior Features	Back Lane, Corner Lot, Fenced, Schools, Shopping Nearby
Roof	Asphalt Shingles
Construction	Wood, Vinyl
Foundation	Concrete Perimeter

**School Information**

Elementary	Waverley/Sainte - Jeanne-d
Middle	kenilworth/St Brendan
High	Mcnally/JH Picard

**Additional Information**

Date Listed	September 30th, 2025
Days on Market	3
Zoning	Zone 18

DATA IS DEEMED RELIABLE BUT IS NOT GUARANTEED ACCURATE BY THE REALTORS® ASSOCIATION OF EDMONTON. COPYRIGHT 2025 BY THE REALTORS® ASSOCIATION OF EDMONTON. ALL RIGHTS RESERVED.Trademarks are owned or controlled by the Canadian Real Estate Association (CREA) and identify real estate professionals who are members of CREA (REALTOR®, REALTORS®) and/or the quality of services they provide (MLS®, Multiple Listing Service®)

Listing information last updated on October 3rd, 2025 at 5:02pm MDT