

\$419,000 - 11412 Malmo Road, Edmonton

MLS® #E4460592

\$419,000

3 Bedroom, 1.00 Bathroom, 987 sqft

Single Family on 0.00 Acres

Malmo Plains, Edmonton, AB

Fantastic opportunity! This 987.27 bungalow in the highly sought-after community of Malmo offers unbeatable access to the LRT, bus routes, shopping, downtown, and the University of Alberta. Perfect as a rental property or for buyers looking to add value through updates. Situated on a 49x126 lot, it's also an excellent option for redevelopment.

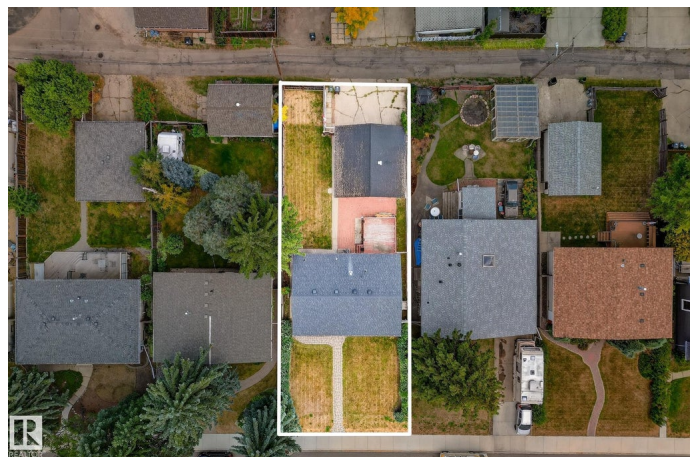
Built in 1963

Essential Information

MLS® #	E4460592
Price	\$419,000
Bedrooms	3
Bathrooms	1.00
Full Baths	1
Square Footage	987
Acres	0.00
Year Built	1963
Type	Single Family
Sub-Type	Detached Single Family
Style	Bungalow
Status	Active

Community Information

Address	11412 Malmo Road
Area	Edmonton



Subdivision	Malmo Plains
City	Edmonton
County	ALBERTA
Province	AB
Postal Code	T6H 4M2

Amenities

Amenities	See Remarks
Parking	Double Garage Detached

Interior

Appliances	Dryer, Refrigerator, Stove-Electric, Washer
Heating	Forced Air-1, Natural Gas
Stories	2
Has Basement	Yes
Basement	Full, Finished

Exterior

Exterior	Wood, Stucco
Exterior Features	Playground Nearby, Public Transportation, Schools
Roof	Asphalt Shingles
Construction	Wood, Stucco
Foundation	Concrete Perimeter

Additional Information

Date Listed	October 1st, 2025
Days on Market	2
Zoning	Zone 15

DATA IS DEEMED RELIABLE BUT IS NOT GUARANTEED ACCURATE BY THE REALTORS® ASSOCIATION OF EDMONTON. COPYRIGHT 2025 BY THE REALTORS® ASSOCIATION OF EDMONTON. ALL RIGHTS RESERVED. Trademarks are owned or controlled by the Canadian Real Estate Association (CREA) and identify real estate professionals who are members of CREA (REALTOR®, REALTORS®) and/or the quality of services they provide (MLS®, Multiple Listing Service®)

Listing information last updated on October 3rd, 2025 at 8:17pm MDT