

Courtesy Of Michael Pino Of RE/MAX Elite

\$339,900 - 304 10142 111 Street, Edmonton

MLS® #E4461254

\$339,900

2 Bedroom, 2.00 Bathroom, 1,140 sqft
Condo / Townhouse on 0.00 Acres

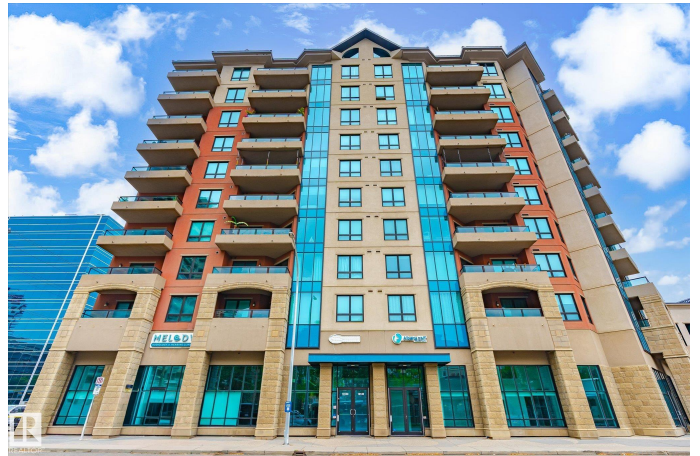
W&hkw&ant&win, Edmonton, AB

Experience refined urban living in this 3rd floor CORNER UNIT at the spectacular MERIDIAN PLAZA. Designed for entertaining, the open-concept layout showcases hardwood floors, 9' ceilings, a cozy gas fireplace, and an elegant living and dining area bathed in NATURAL LIGHT from south-facing windows & patio doors to the balcony. The well-appointed kitchen features granite countertops, stainless steel appliances, and a stylish breakfast bar. The primary suite offers a spa-inspired 5pc ensuite with dual vanities, soaker tub, glass shower, and a spacious walk-in closet. A second generous bedroom and full bath are privately situated on the opposite side of the suite. Additional highlights include in-suite laundry with storage, TITLED UNDERGROUND PARKING, and access to PREMIUM AMENITIES: a Mediterranean-style atrium, fitness centre, owners' lounge, event space with a full kitchen, & bike storage. Just one block to Jasper Ave and steps from restaurants, trails, shopping conveniences, & the Ice District.

Built in 2009

Essential Information

MLS® #	E4461254
Price	\$339,900



Bedrooms	2
Bathrooms	2.00
Full Baths	2
Square Footage	1,140
Acres	0.00
Year Built	2009
Type	Condo / Townhouse
Sub-Type	Apartment High Rise
Style	Single Level Apartment
Status	Active

Community Information

Address	304 10142 111 Street
Area	Edmonton
Subdivision	WÃ©hkwÃ©ntÃ©win
City	Edmonton
County	ALBERTA
Province	AB
Postal Code	T5K 1K6

Amenities

Amenities	Air Conditioner, Ceiling 9 ft., Detectors Smoke, Exercise Room, Secured Parking, Security Door, Social Rooms, Sprinkler System-Fire, Sunroom, See Remarks
Parking Spaces	1
Parking	Heated, Parkade, Underground

Interior

Interior Features	ensuite bathroom
Appliances	Dishwasher-Built-In, Dryer, Hood Fan, Refrigerator, Stove-Electric, Washer
Heating	Heat Pump, Electric, Water
Fireplace	Yes
Fireplaces	Corner, Mantel, Tile Surround
# of Stories	10
Stories	1
Has Basement	Yes
Basement	None, No Basement

Exterior

Exterior	Concrete, Stone, Stucco
Exterior Features	Back Lane, Golf Nearby, Public Transportation, Shopping Nearby, View Downtown
Roof	Metal, Tar & Gravel
Construction	Concrete, Stone, Stucco
Foundation	Concrete Perimeter

Additional Information

Date Listed	October 7th, 2025
Days on Market	13
Zoning	Zone 12
Condo Fee	\$747

DATA IS DEEMED RELIABLE BUT IS NOT GUARANTEED ACCURATE BY THE REALTORS® ASSOCIATION OF EDMONTON. COPYRIGHT 2025 BY THE REALTORS® ASSOCIATION OF EDMONTON. ALL RIGHTS RESERVED. Trademarks are owned or controlled by the Canadian Real Estate Association (CREA) and identify real estate professionals who are members of CREA (REALTOR®, REALTORS®) and/or the quality of services they provide (MLS®, Multiple Listing Service®)

Listing information last updated on October 20th, 2025 at 5:02am MDT